

iD-GRID 

& SIEMENS PLC PROFINET Connection Operating Manual



Table of Contents

1.	Example Remote I/O Module System Configuration List	3
1.1	Product Description	3
2.	Coupler Parameter Settings.....	4
2.1	Preceding Operation of Software Setup.....	4
2.2	Coupler Software Setup.....	6
3.	Siemens S7-1200 Connection Setup.....	13
3.1	Siemens S7-1200 hardware connection	13
3.2	Siemens S7-1200 IP Address and Connection Setup	14

1. Example Remote I/O Module System Configuration List

Part No.	Specification	Remarks
GF2-C004T	PROFINET Coupler	
GF2-DI01T	16-channel digital input module, Sink, 24VDC	
GF2-DQ01T	16-channel digital output module, Sink, 24VDC	
GF2-AI01T	4-channel analog input module (-10... 10VDC, 0...10VDC · 0...5VDC)	
GF2-AQ01T	4-channel analog output module (-10... 10VDC, 0...10VDC · 0...5VDC)	
GFPS-0202	Power 24V / 48W	

1.1 Product Description

- I. The coupler connects to the communication port (PROFINET) on Siemens S7-120
- II. The coupler is in charge of the management and dynamic configuration of I/O parameters and so on.
- III. The power module is standard for remote I/Os and users can choose the model or brand of power module they prefer.

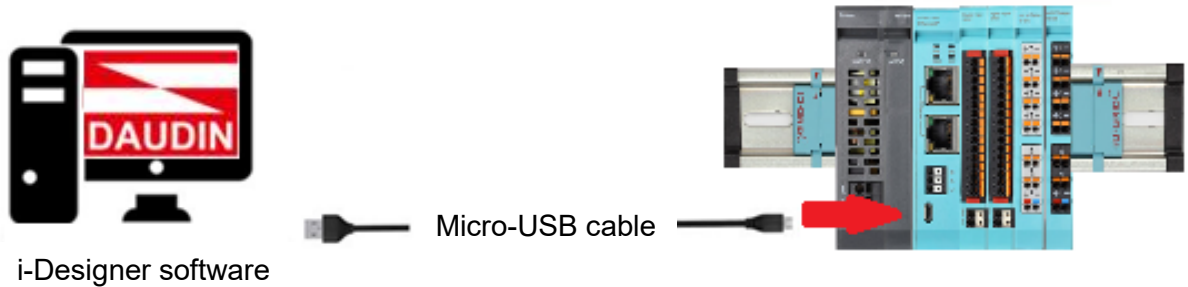
2. Coupler Parameter Settings

This chapter explains how a coupler connects to Siemens S7-1200, detailed introduction on [iO-GRID C](#), please refer to the i-Designer User Manual

2.1 Preceding Operation of Software Setup

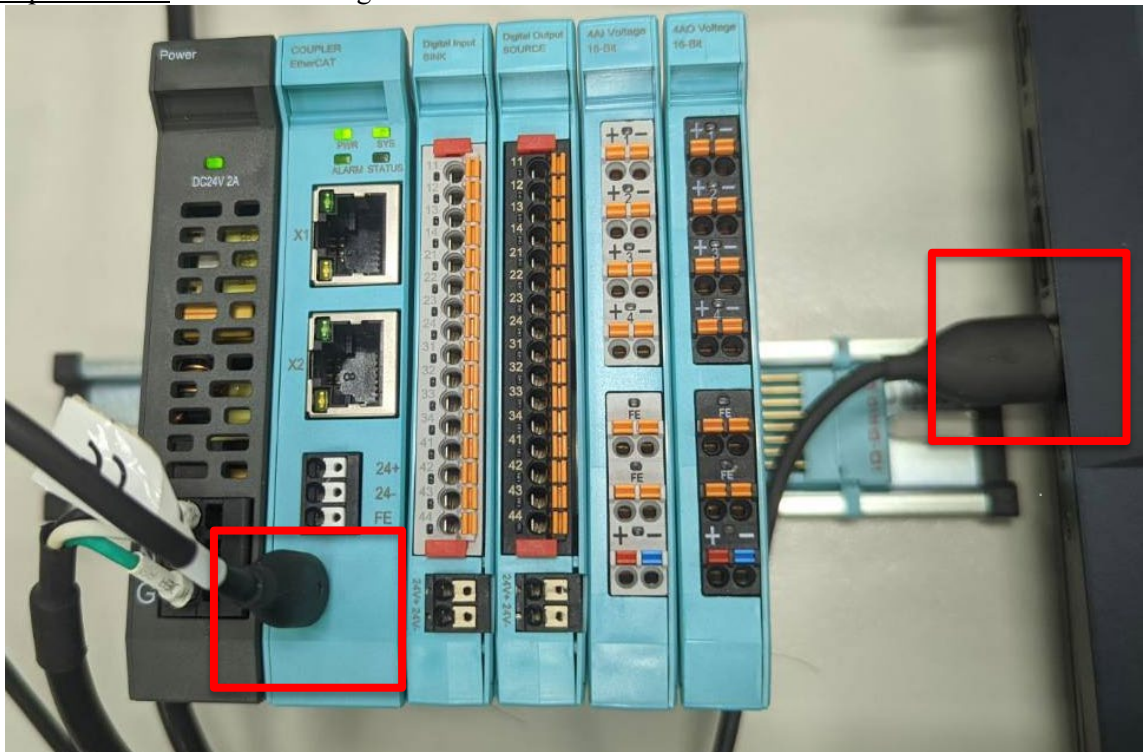
Connect with the coupler module using a Micro-USB cable
Plug your Micro-USB cable to the Micro-USB port on your coupler module.
Make sure the fieldbus is powered and then open the i-Designer setup program
Coupler Module Parameters Setup

Coupler module connection illustration:



※ Before setting up the coupler module, please confirm that the I/O modules are **lined up closely** on the fieldbus

Coupler module connection image:



2.2 Coupler Software Setup

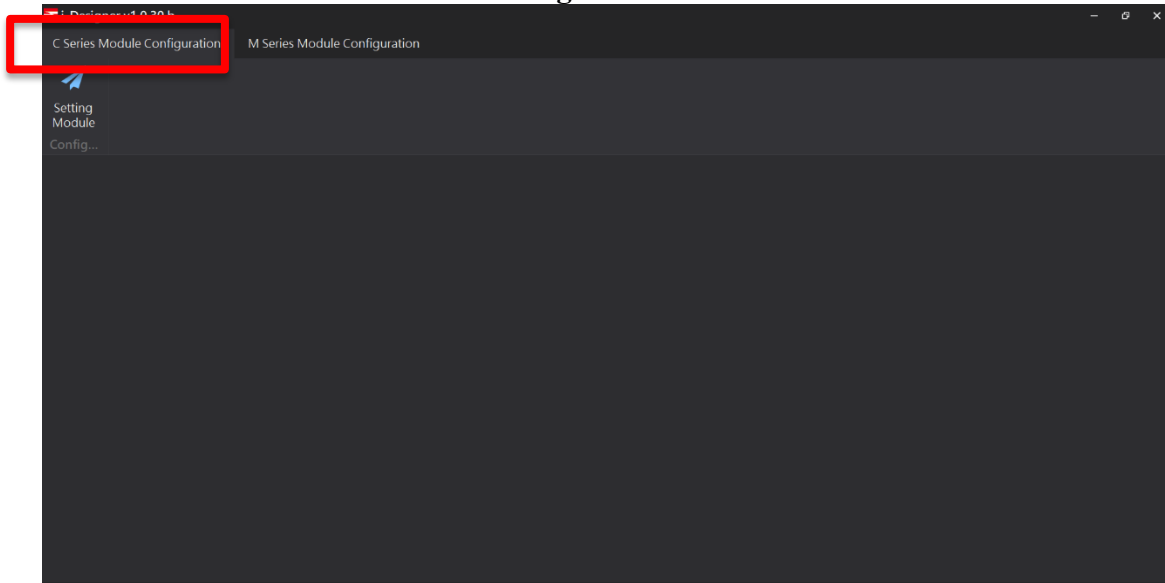
I. Make sure that the module is powered and connected to the USB port



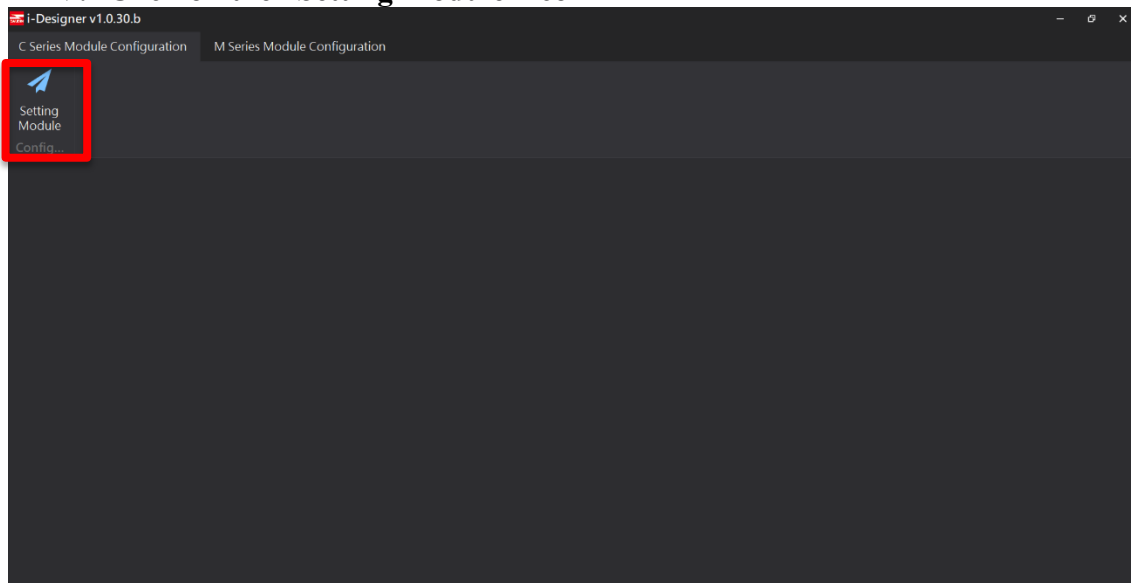
II. Click to launch the software



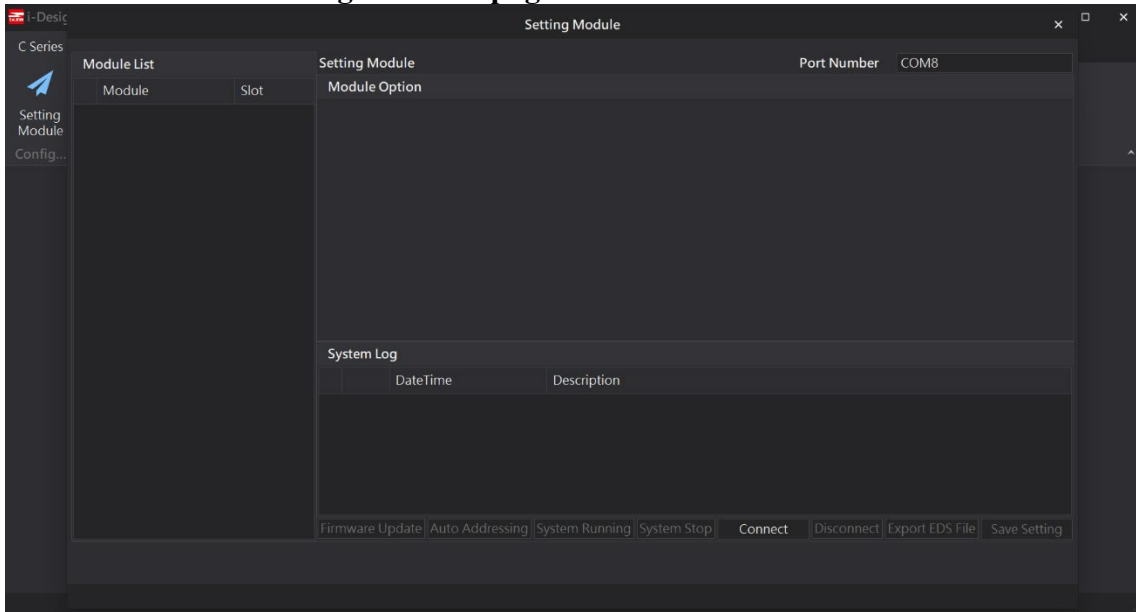
III. Select “C Series Module Configuration”



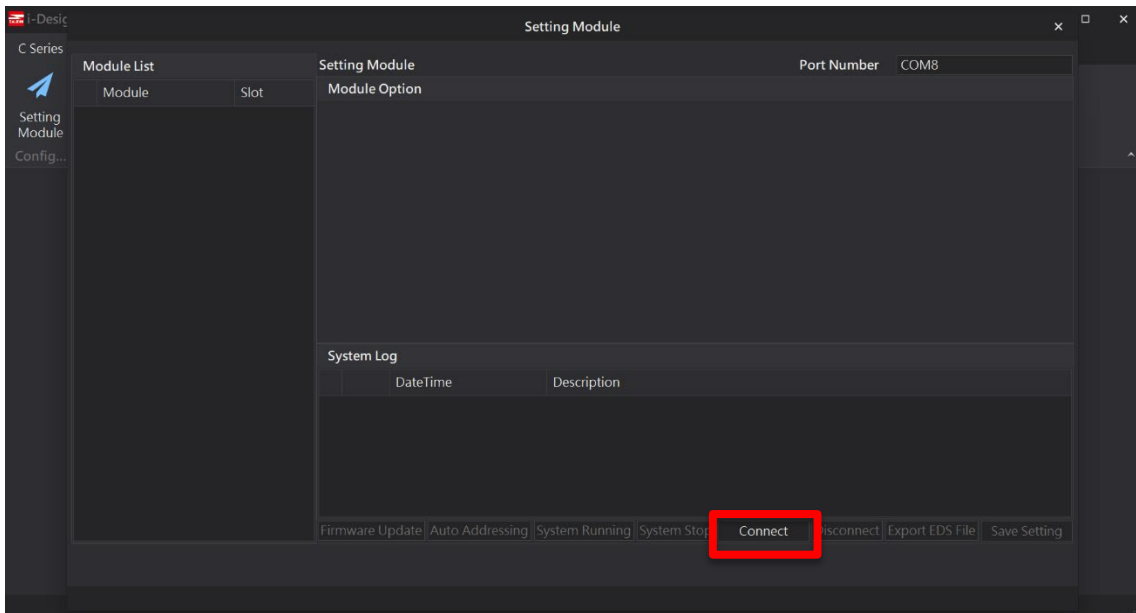
IV. Click on the “Setting Module” icon



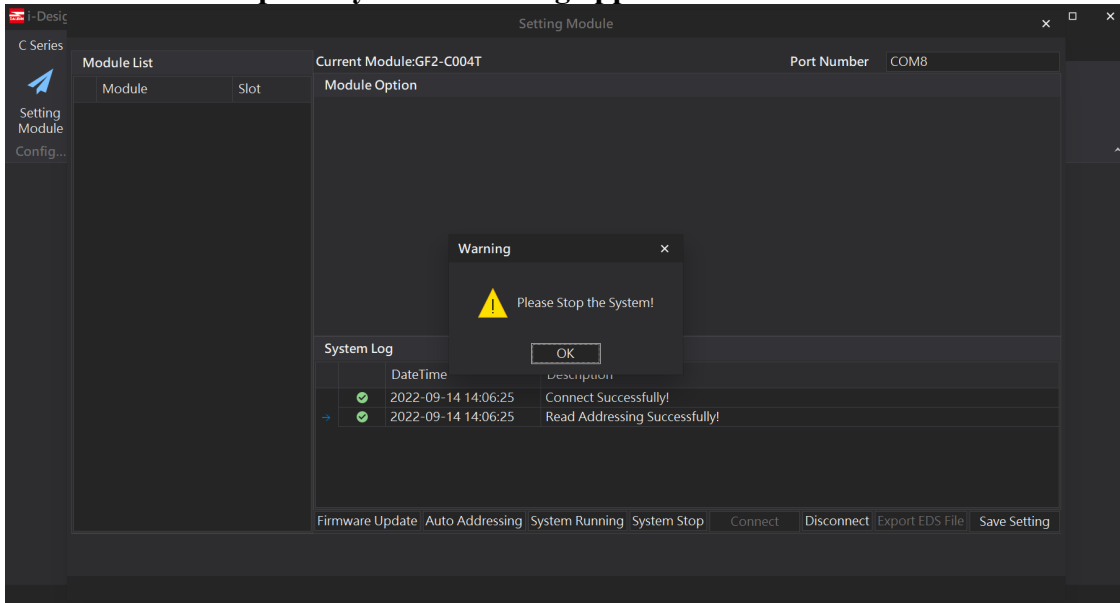
V. Enter the “Setting Module” page for C-series



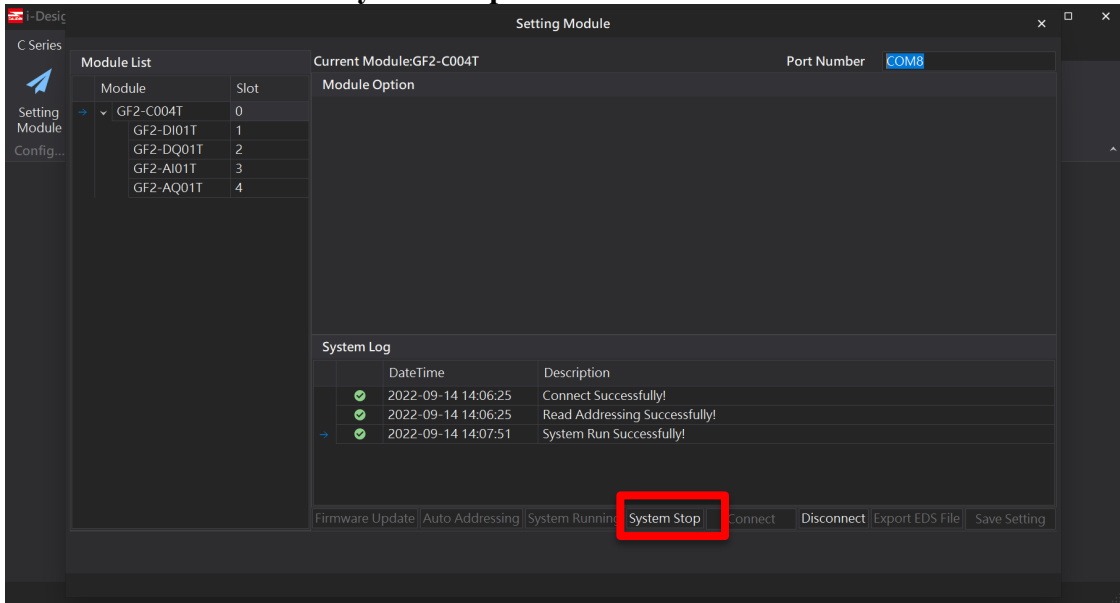
VI. Click on “Connect”

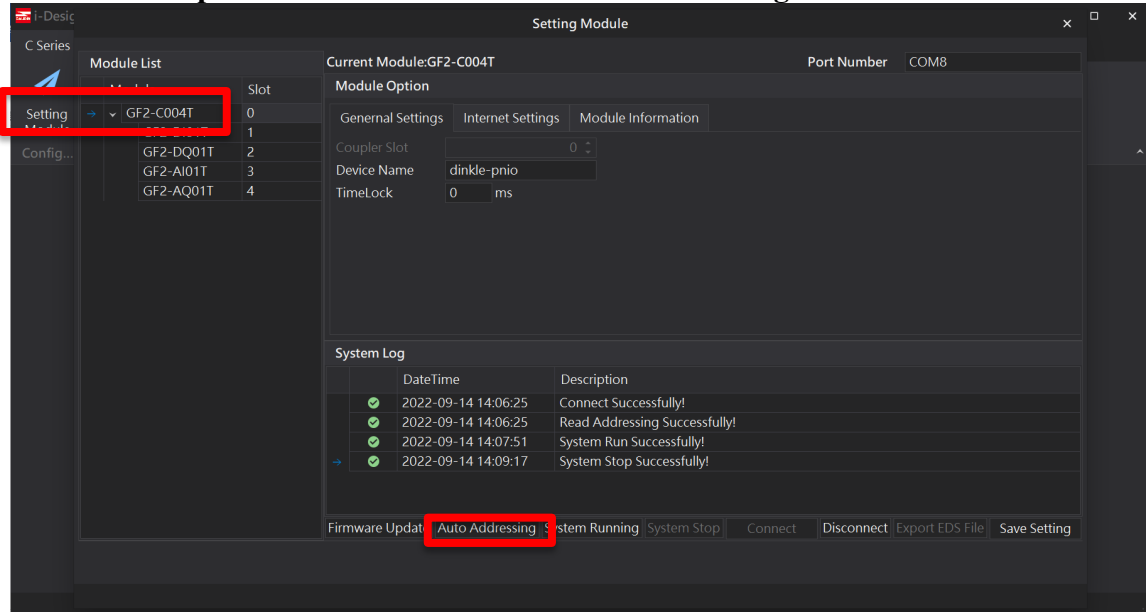
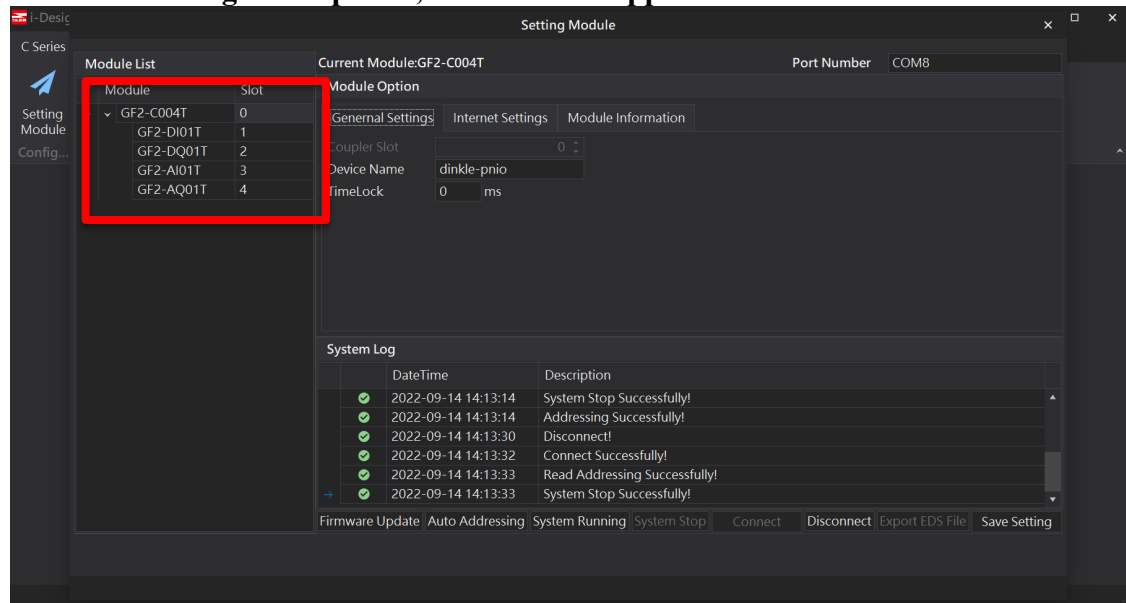


VII. “Please Stop the System” warning appears

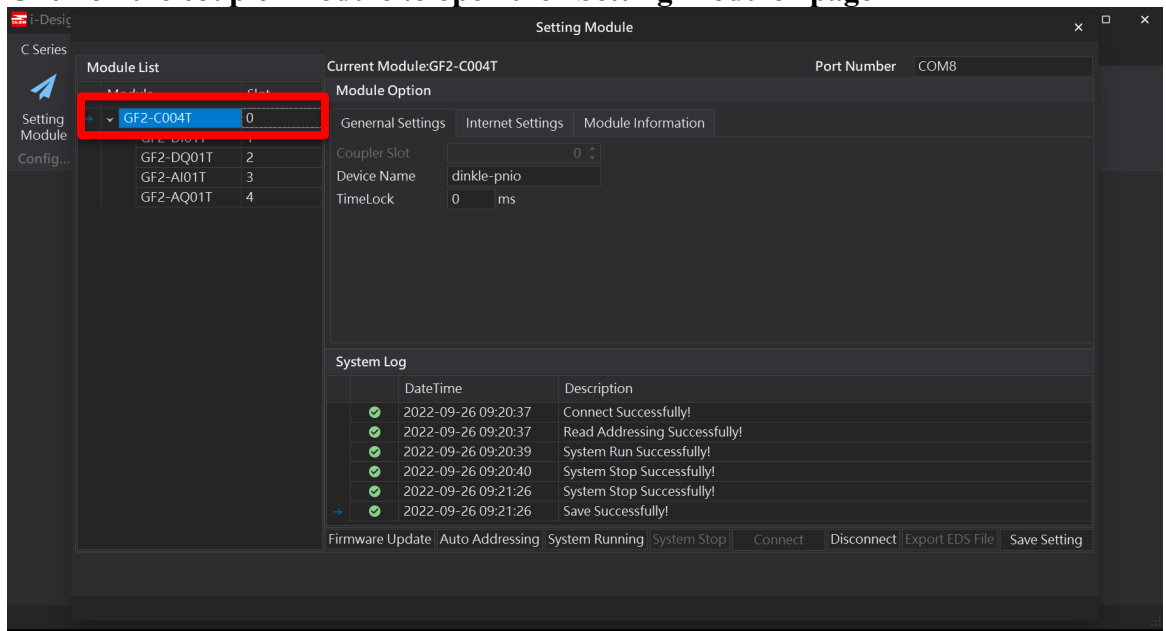


VIII. Click on “System Stop”

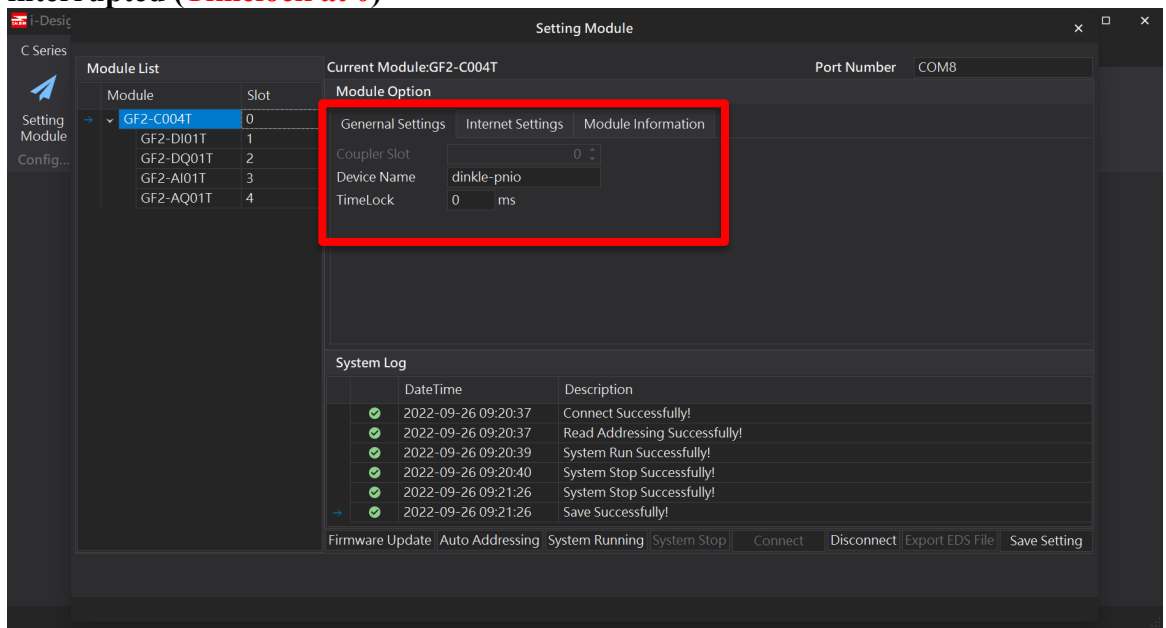


IX. Select the coupler module and click on “Auto Addressing”

X. Once addressing is completed, modules will appear on the “Module List” on the left


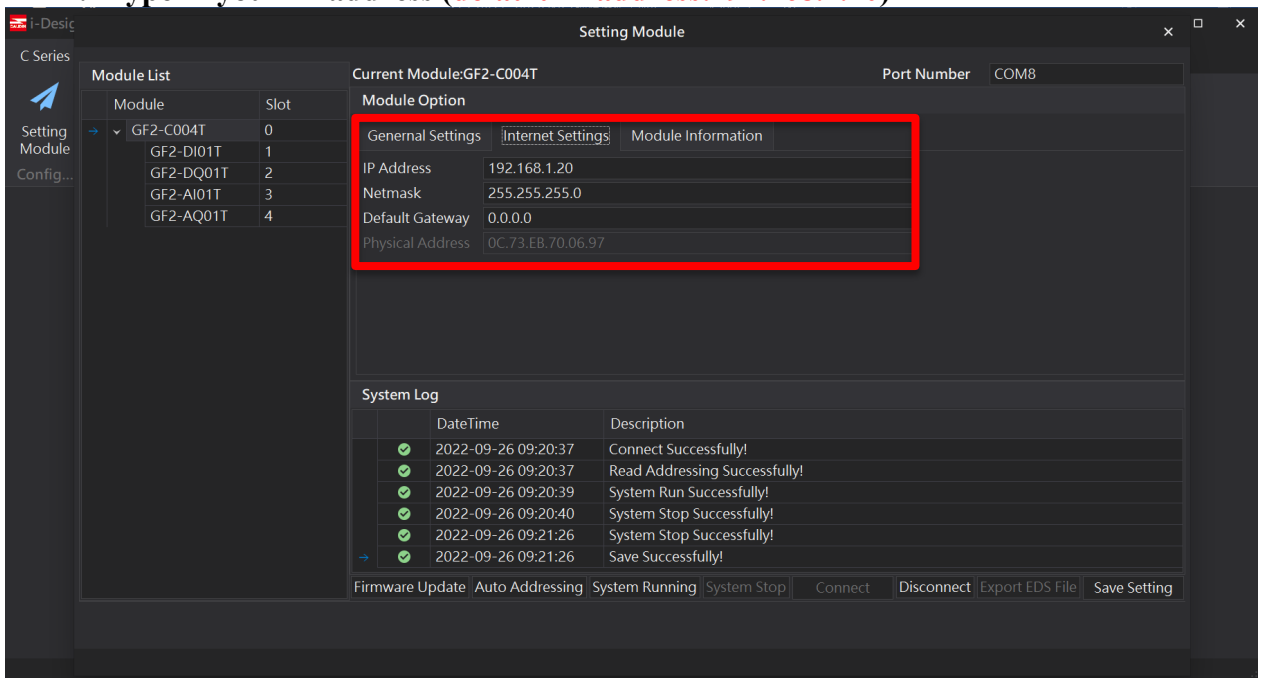
XI. Click on the coupler module to open the “Setting Module” page



XII. Type in the device name and if transmission should continue once connection is interrupted (**Timelock at 0**)



XIII. Type in your IP address (default IP address:192.168.1.20)

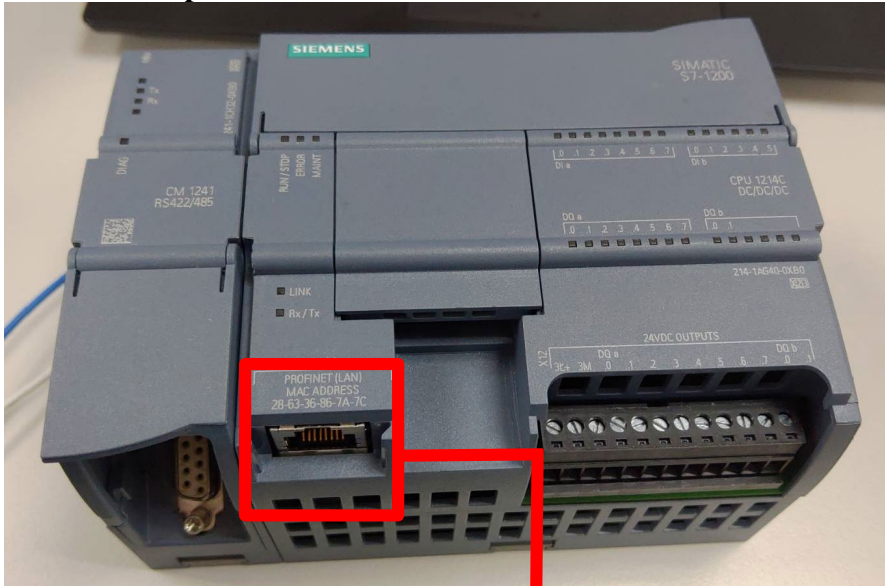


3. Siemens S7-1200 Connection Setup

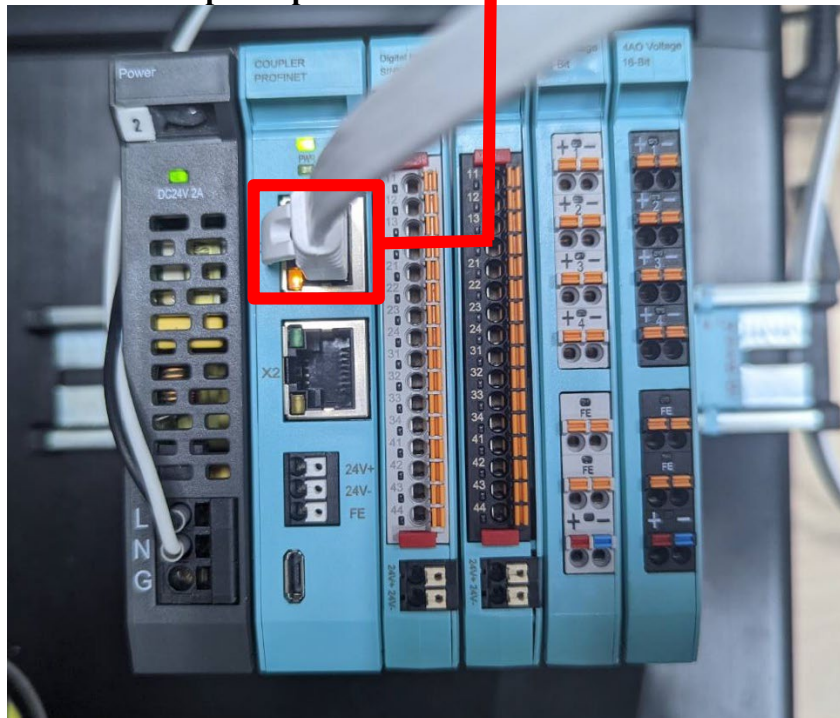
This chapter explains how to use the TIA Portal program to connect S7-1200 and a coupler and add a remote I/O module. For detailed information, please refer to the “*SIMATIC STEP 7*” section in the user manual

3.1 Siemens S7-1200 hardware connection

I. The connection port is at the bottom of the middle section of the device

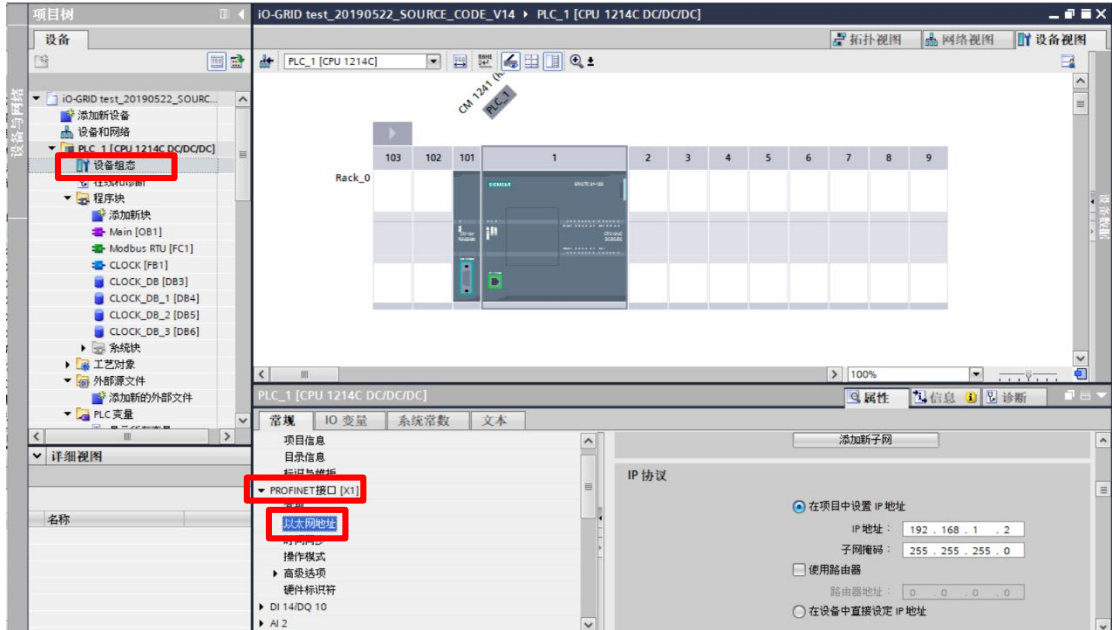


II. Connect it to the coupler's port



3.2 Siemens S7-1200 IP Address and Connection Setup

- I. Open the TIA Portal, click on “Device Configuration” and then the “PROFINET Port” menu

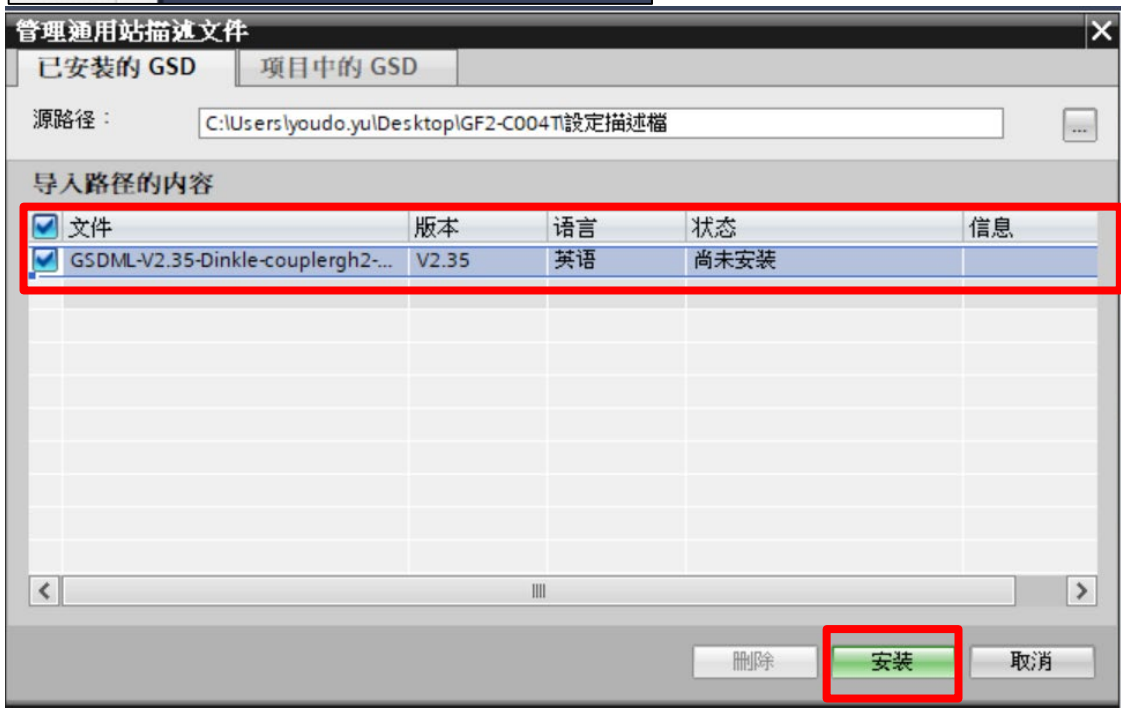
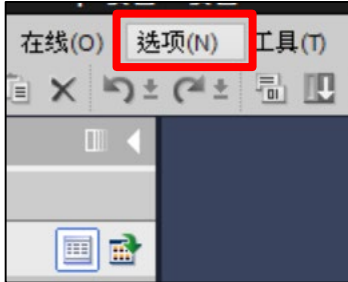


- II. Click on “Ethernet Address” and type in the IP address (same as the coupler at 192.168.1.XXX)



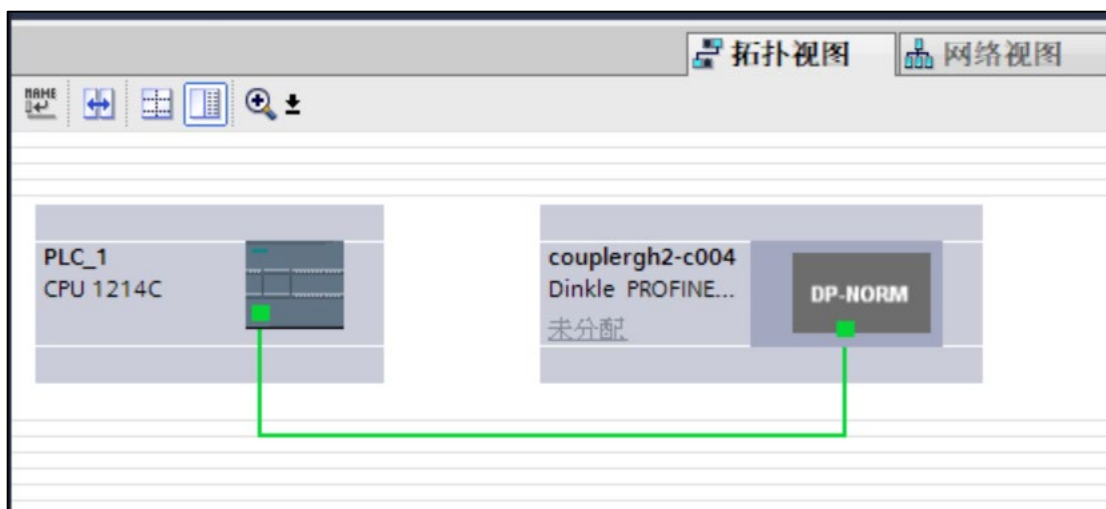
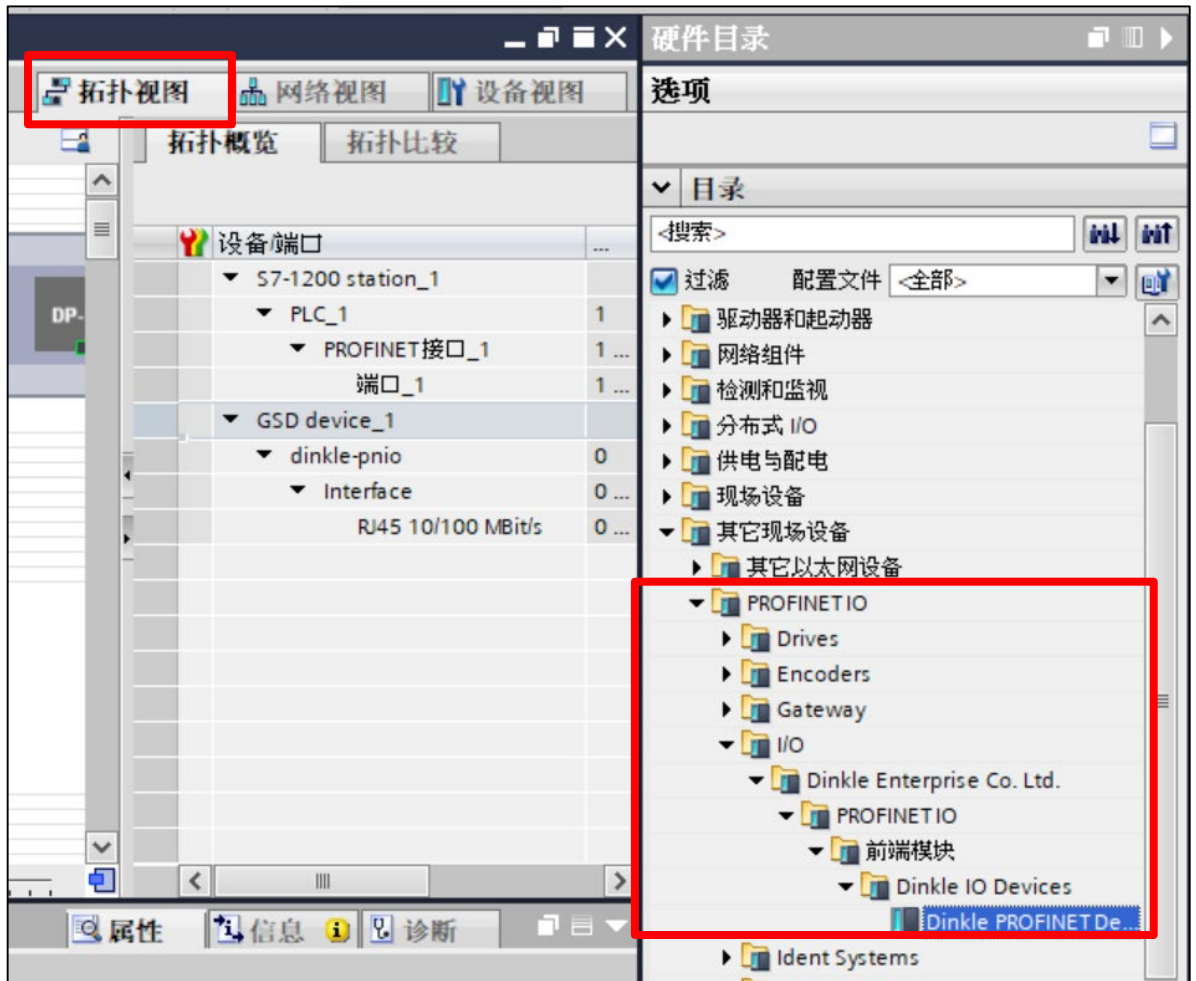
III. GSDML Document Installation

- Click on “Options” on the menu bar
- Select “Manage GSD File” from the drop-down menu
- Choose the GSDML file you want and click on “Install”



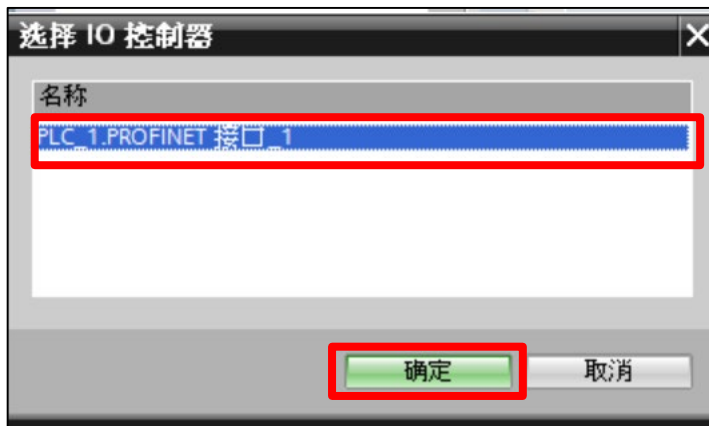
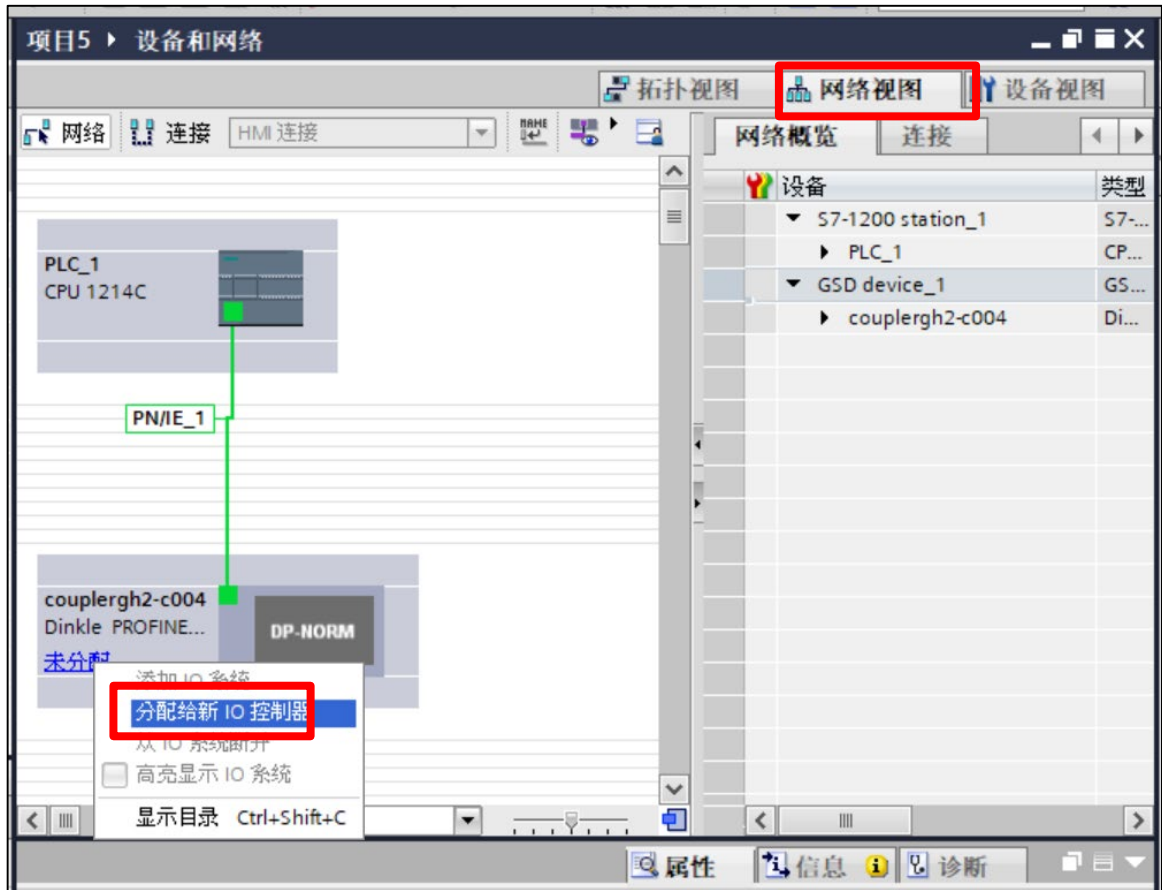
IV. Click on the “Topology View”

- Select “PROFINET IO” on the right-side menu
- Select “I/O” and choose to add “Dinkle I/O” to the PLC network

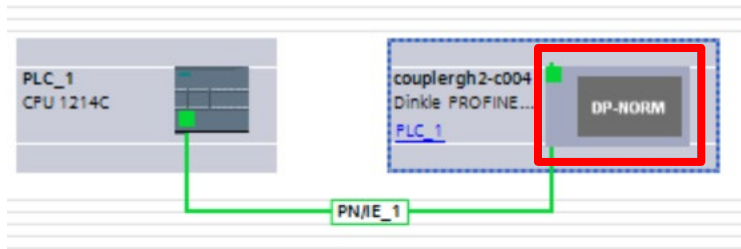


V. Select “Network View”

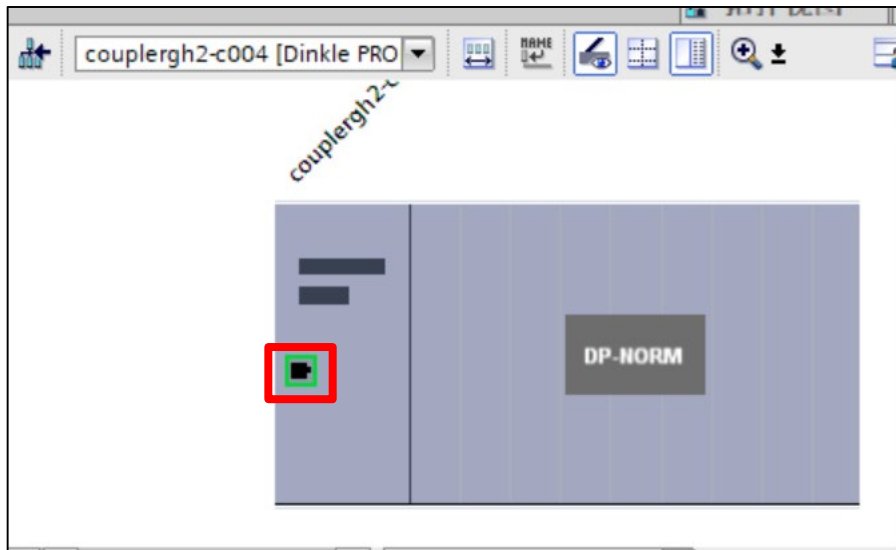
- Right-click on the I/O port and select “Assign to a new I/O controller”



VI. Double-click on the icon of GF2-C004T



VII. Select the IP address to connect to (module default IP address is 192.168.1.20)

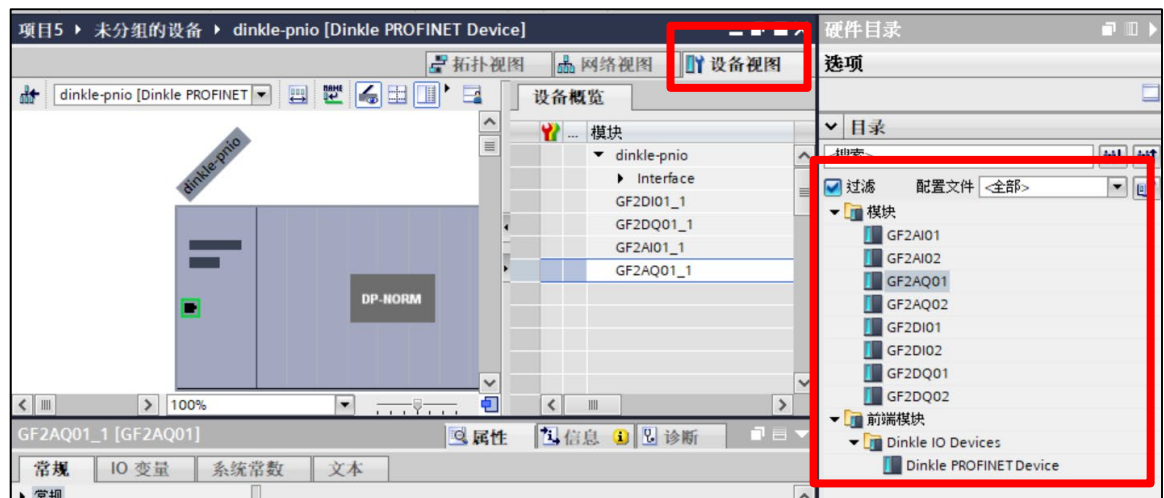


VIII. Under the 【Equipment View】 & 【Hardware Menu】

- Add modules in the same sequence as UI's addressing

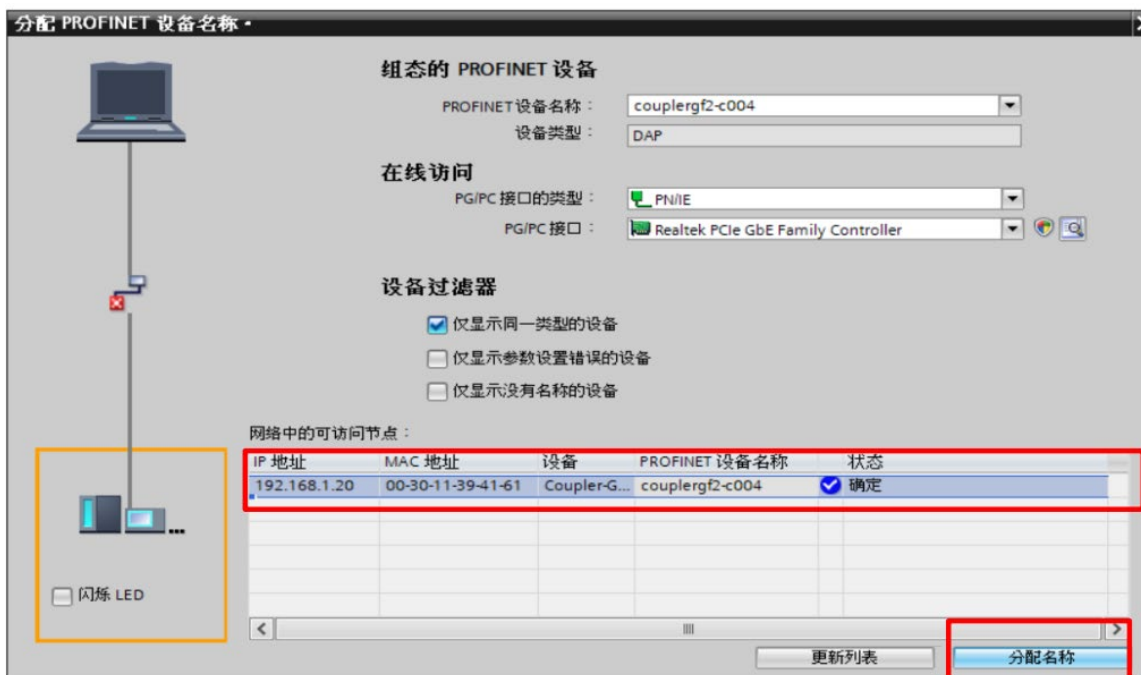
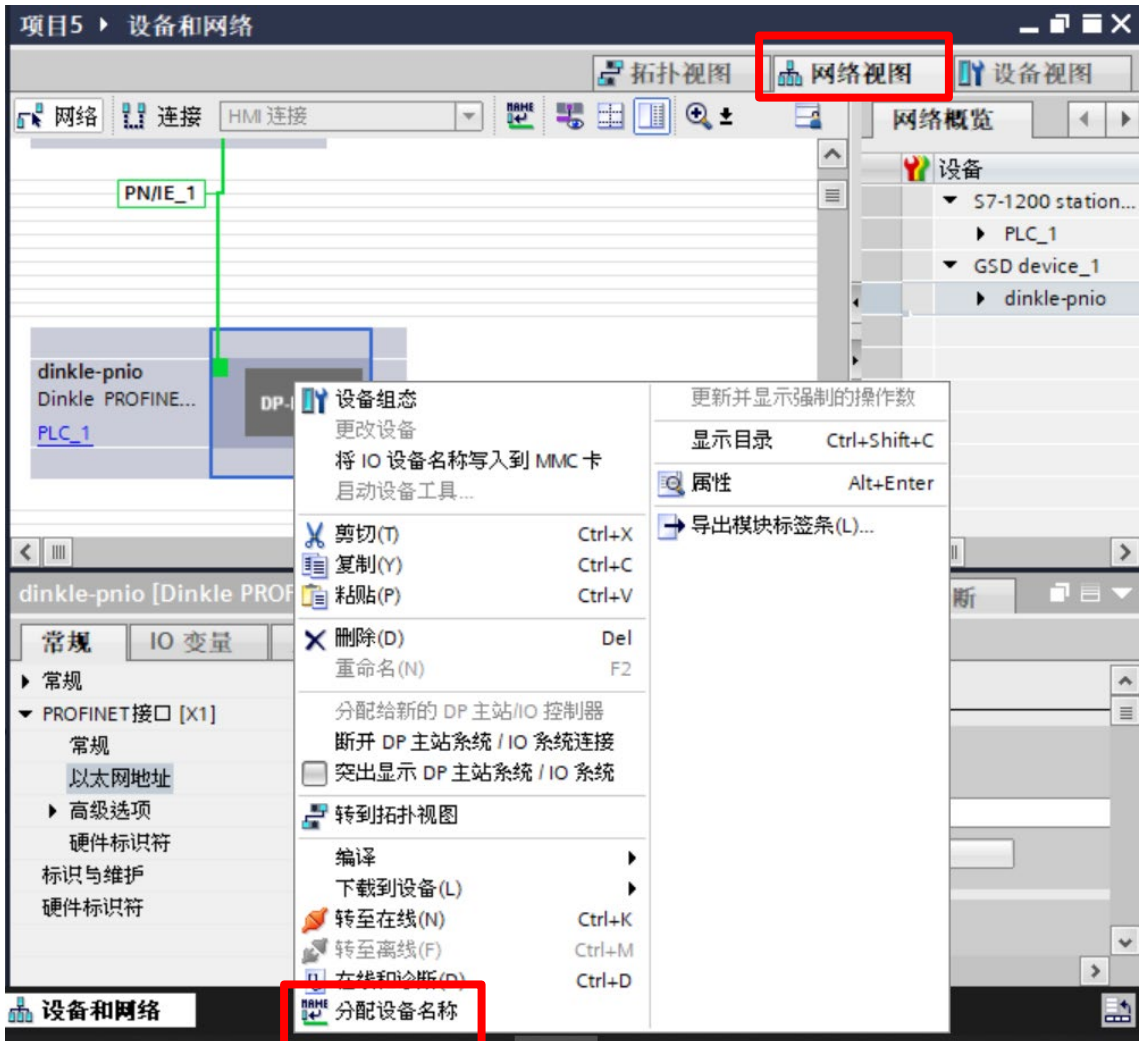
※Attention! The sequence must be the same as UI's addressing. Otherwise the device cannot communicate normally.

Module List	
Module	Slot
GF2-C004T	0
GF2-DI01T	1
GF2-DQ01T	2
GF2-AI01T	3
GF2-AQ01T	4



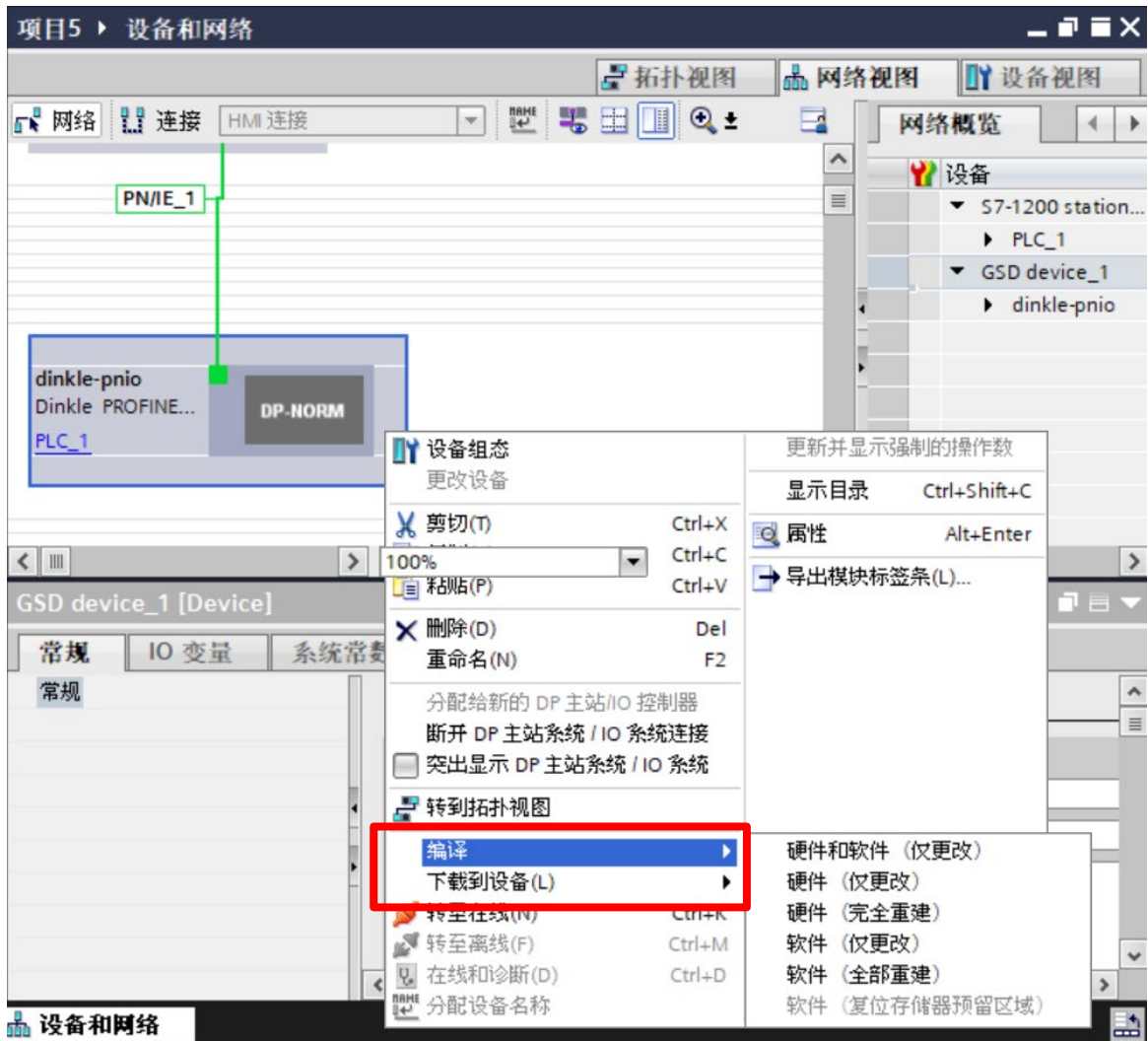
IX. Click on “Network View”

- Assign device names



X. Right click on the device, select “Compile” and download it to PLC

- Hardware (completely rebuilt)
- Software (fully rebuilt)
- Download to equipment (hardware configuration)
- Download to equipment (download all of the software)



XI. Register addresses are assigned based on the modules added

设备概览					
..	模块	机架	插槽	I 地址	Q 地址
	▼ dinkle-pnio	0	0		
	▶ Interface	0	0 X1		
	GF2DI01_1	0	1	68...69	
	GF2DQ01_1	0	2		64...65
	GF2AI01_1	0	3	2...9	
	GF2AQ01_1	0	4		2...9
		0	5		

EX: %I168.0 at first DI, %I168.1 at second DI, %IW2 at first channel of AI and %IW4 at second channel of AIC