



DAUDIN CO., LTD.

---

2105TW

V1.0.1

**iO-GRID™**  
**USB Converter**  
**User Manual**



## **Table of Contents**

1. USB Converter List .....	3
2. USB Converter Information .....	4
2.1 Setup Panel Information .....	4
3. GFTL-RM01 Instructions.....	6
4. GFTL-RM02 Instructions.....	8



## 1. USB Converter List

Product No.	Description	Remarks
GFTL-RM01	Converts USB signals to RS232 signals	
GFTL-RM02	Converts USB signals to RS485 signals	

## 2. USB Converter Information

### 2.1 Setup Panel Information

I. GFTL-RM01

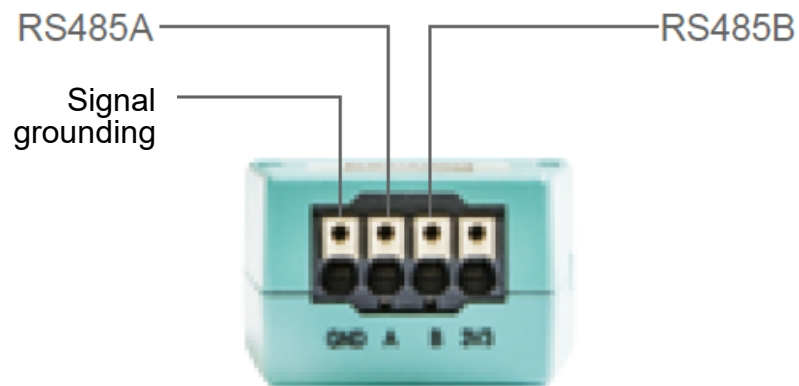
Converts USB signal to RS232 signal with Micro USB cable



I. GFTL-RM02

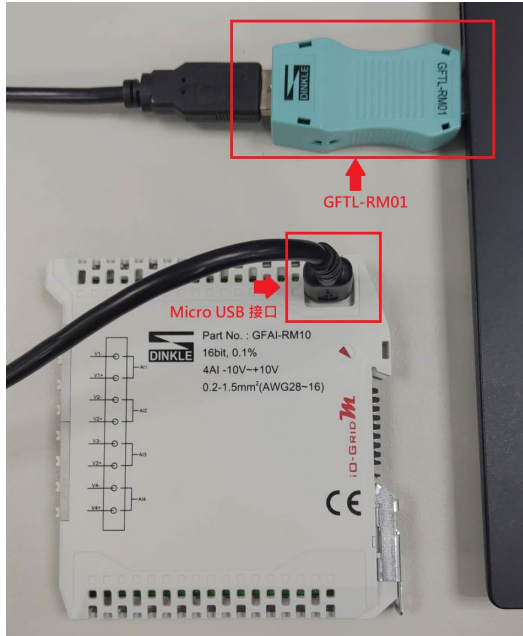


Wiring Range <b>(IEC/UL)</b>	0.14 ~ 1.5mm <sup>2</sup> /AWG 28 ~ 16
Wiring ferrules	DN00510D
	DN00710D



### 3. GFTL-RM01 Instructions

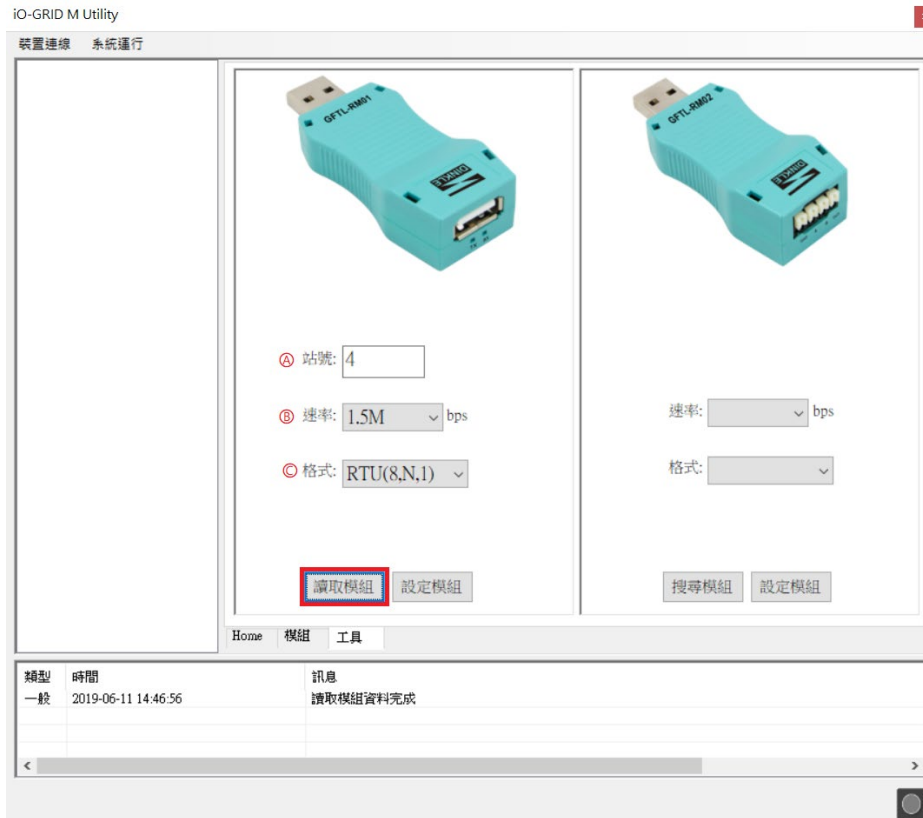
#### I. Connect the I/O module to your computer



#### II. Open the iO-GRID M Utility software and click on “Tools” to open the “Tools” page



### III. Click on “Read the Module” and set up the module parameters



- Ⓐ Set up station numbers as planned
- Ⓑ Select the baud rate in the drop-down menu
- Ⓒ Select the “RTU (8,N,1)” format in the drop-down menu

※No repetitive station numbers on the same DINKLE Bus

※When using control modules, the baud rate can be set at 1.5M bps

### IV. Click on “Set Up the Module” to complete the setup process

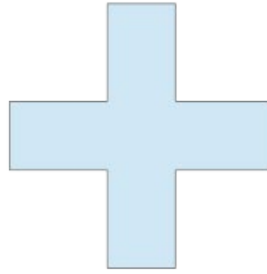
## 4. GFTL-RM02 Instructions

GFTL-RM02 can convert USB signals to RS485 signals

### I. Use GFTL-RM02 and 0170-0101 to convert 485 signals to RJ45



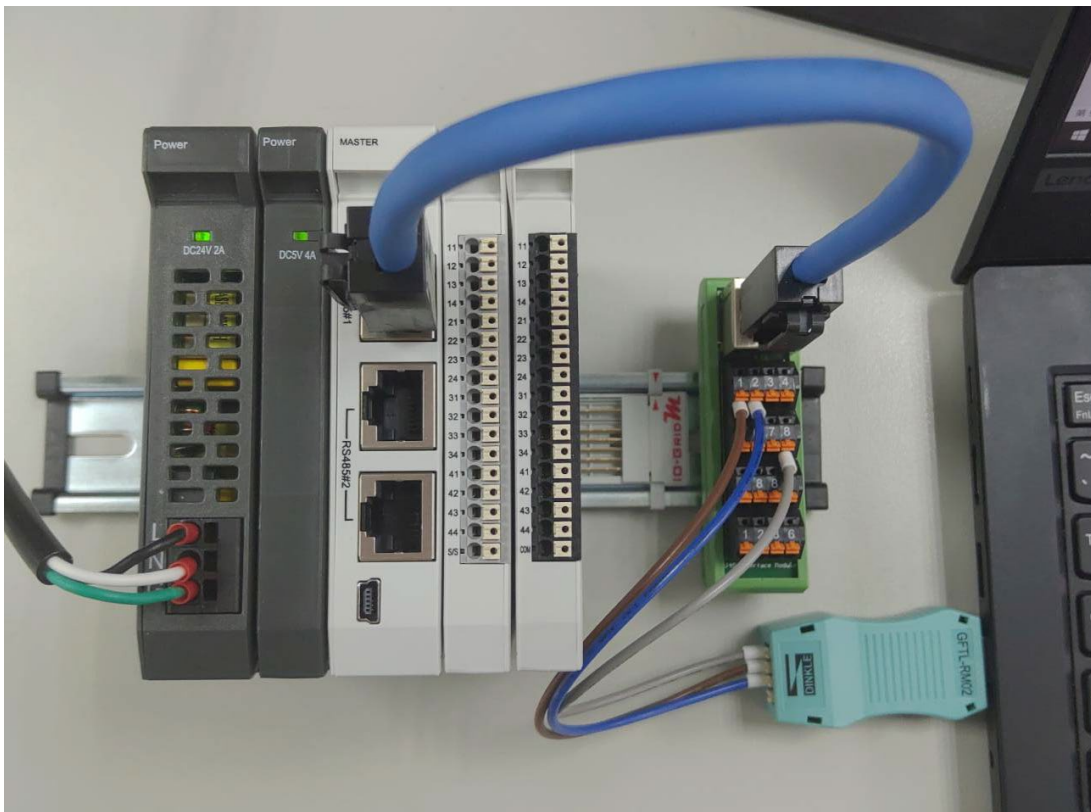
GFTL-RM02



0170-0101

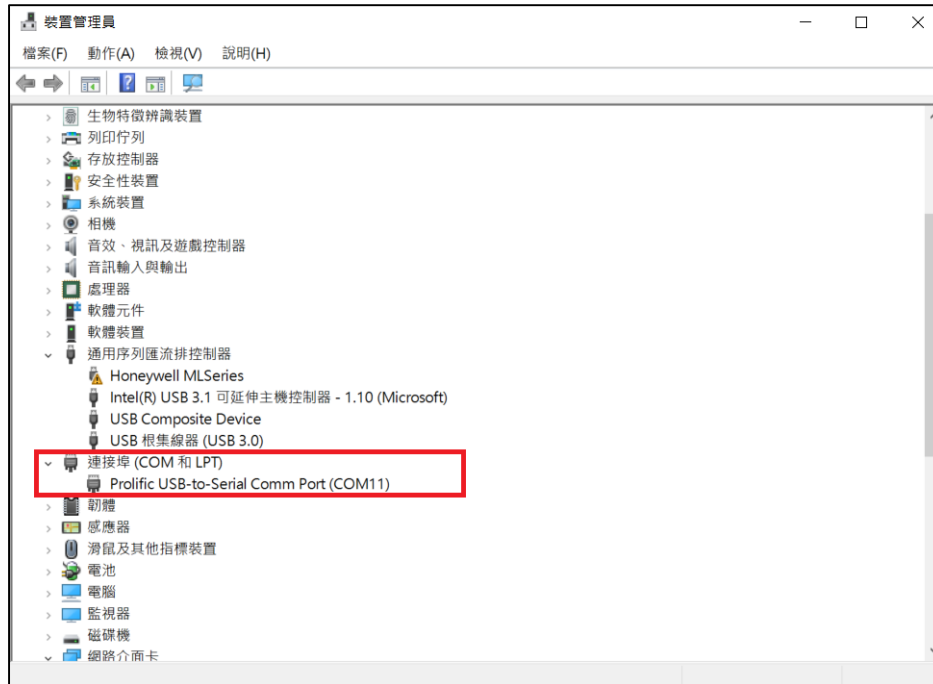
Pin 1	Pin 2	Pin 8
485A	485B	Signal ground

### II. Connect GFTL-RM02 to a computer and then connect RJ45 to a control module

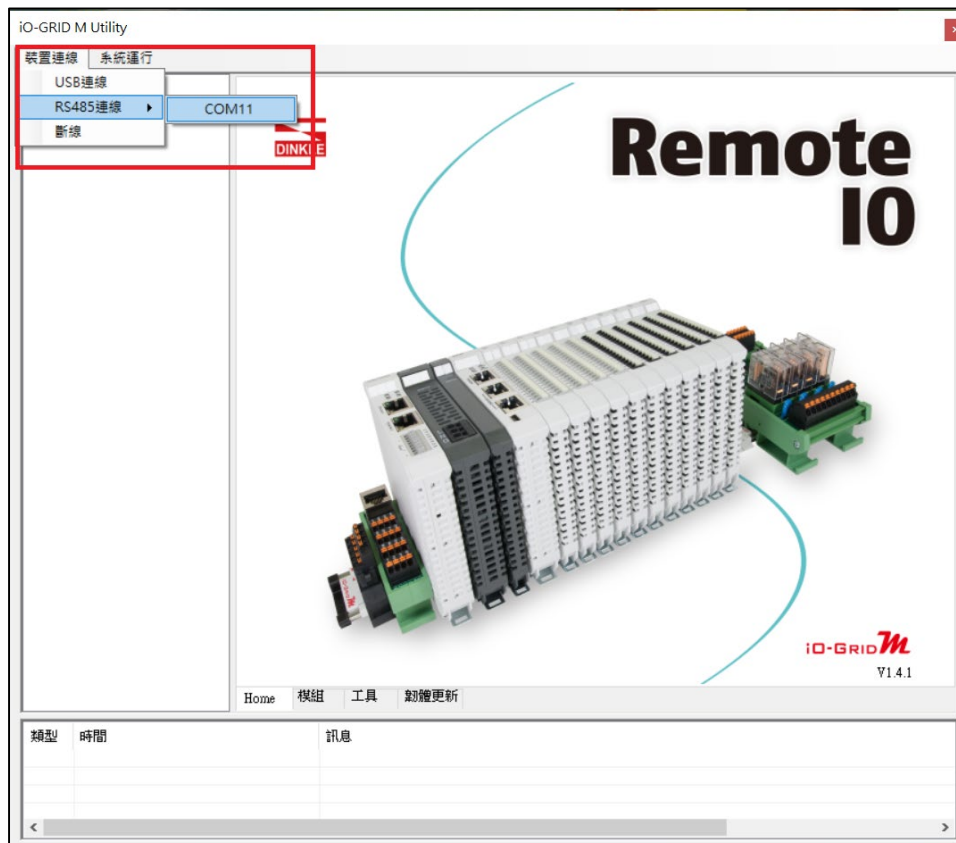




III. Open “Control Panel” on your computer and click on “Device Manager” to view the connected CommPort



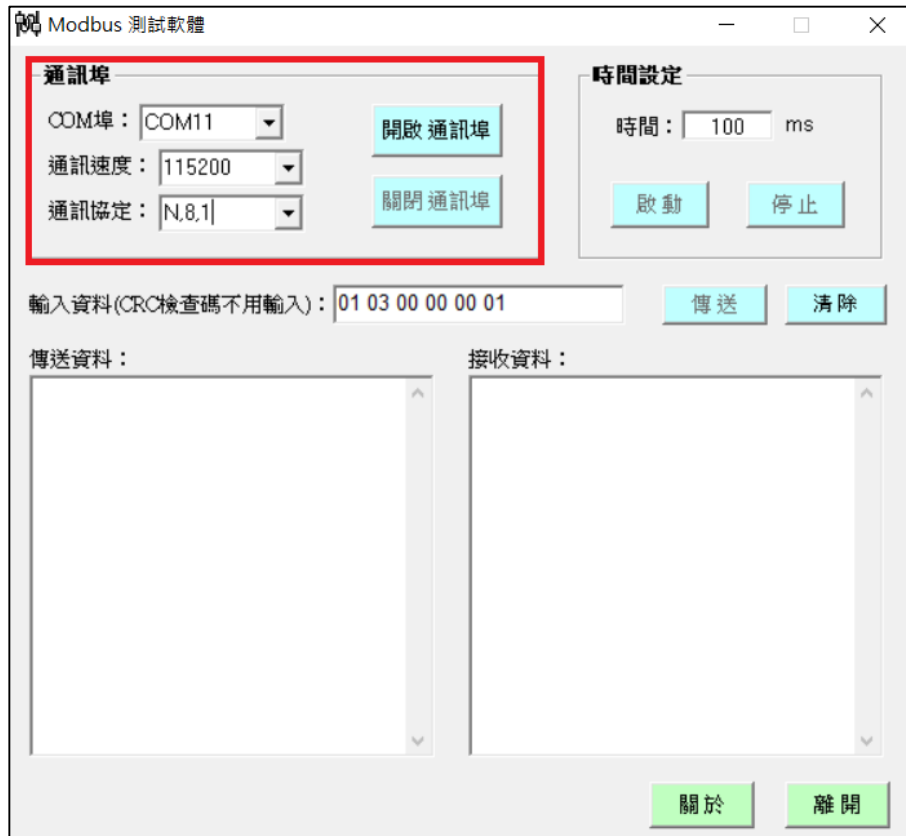
IV. Open iO-GRID M Utility and click on “Connected Devices”. Then select “Connect RS485” and choose its ComPort



※ When using RS485 to set up a control module, it can only connect to RS485#1

V. Once successfully connected, you can set up the module. For detailed setting instructions, please refer to the *iO-GRID M Utility User Manual*

VI. You can also use other Modbus testing software in the market. As long as the software has the same settings as the control module, they can communicate with each other.



## VII. Send (test) the reading and writing commands

