



iO-GRID X Series

GX-CL110

ProfiNet coupler

with CoDeSys



目錄

1. Solution	3
1.1 Install “CoDeSys V3”	3
1.2 Create a new project	3
1.3 Add ProfiNet device	5
1.4 Add ProfiNet-Slave device	8
1.5 Assign variables	10

1. Solution

1.1 Install “CoDeSys V3”

Download “CoDeSys V3.5 Patch 4” demo version, available on:

http://www.3s-software.com/index.shtml?en_download

Start “setup.exe” and follow installation instructions.

Take care that both products “IDE” and “SoftPLC” will be installed.

1.2 Create a new project

Select “Menu -> File -> New Project...” or press [Ctrl] + N.

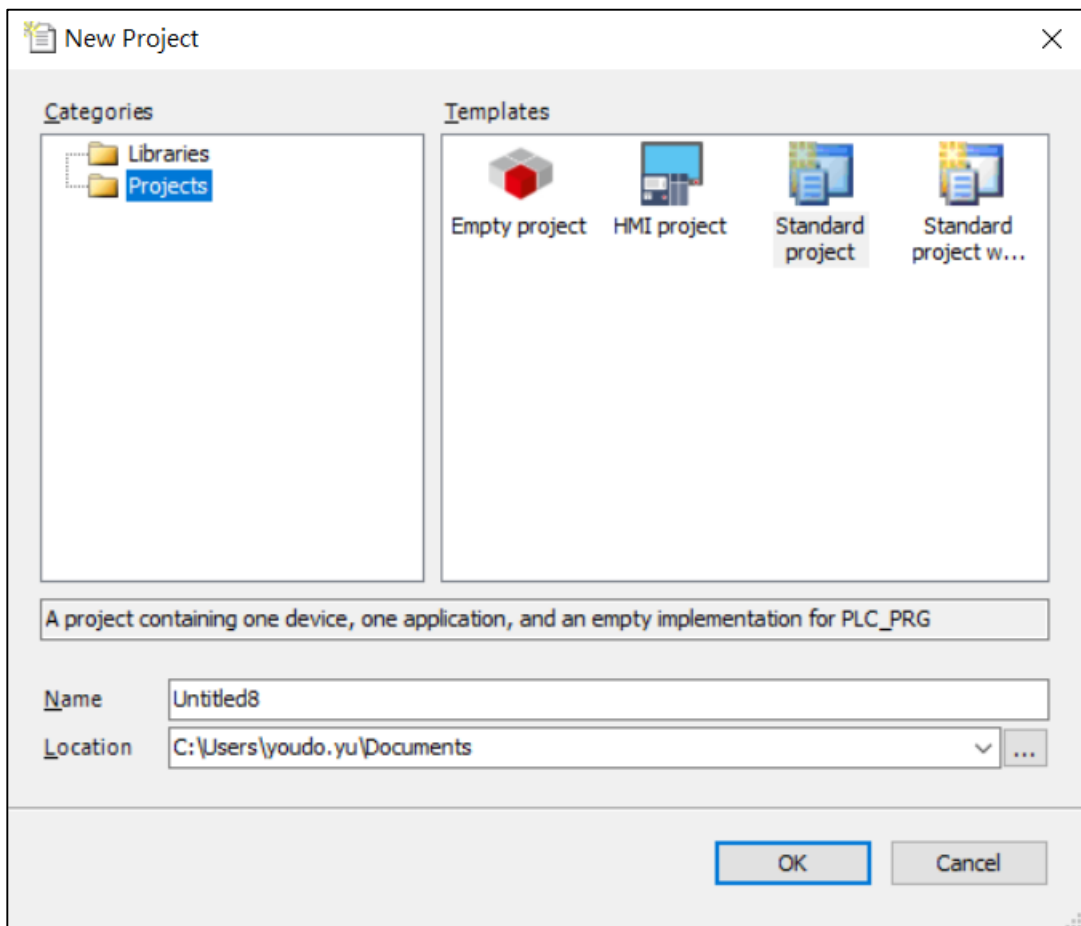


Fig1.1 Create a new project

Select “Standard project” and assign name and storage folder.

Afterwards press button “OK”

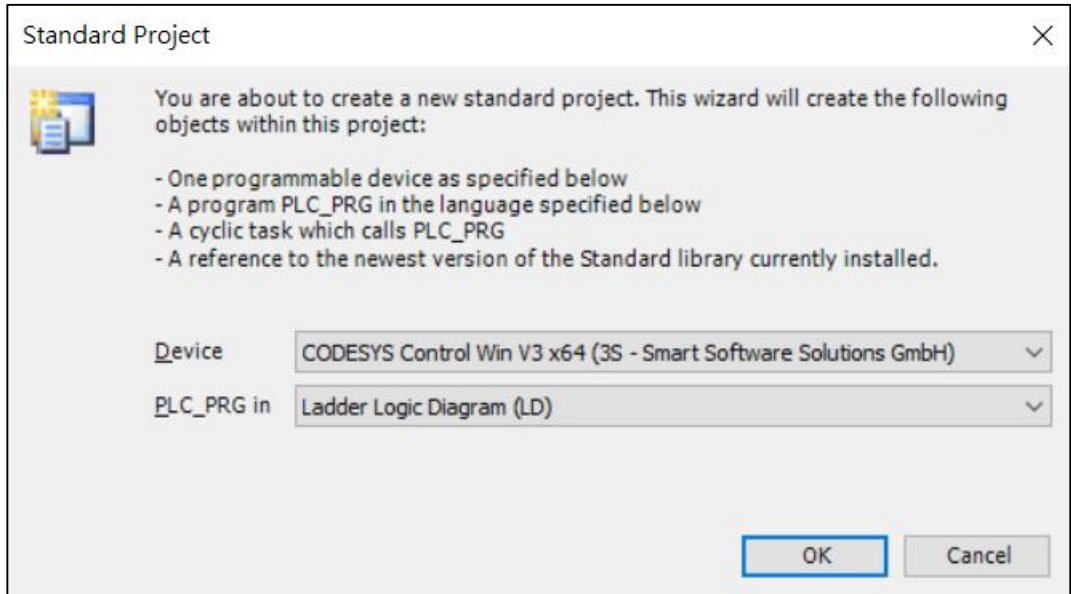


Fig1.2 Create a new project

Select “CoDeSys Control Win V3 x64” as target device and programming language for PLC_PRG. Afterwards press button “OK”.

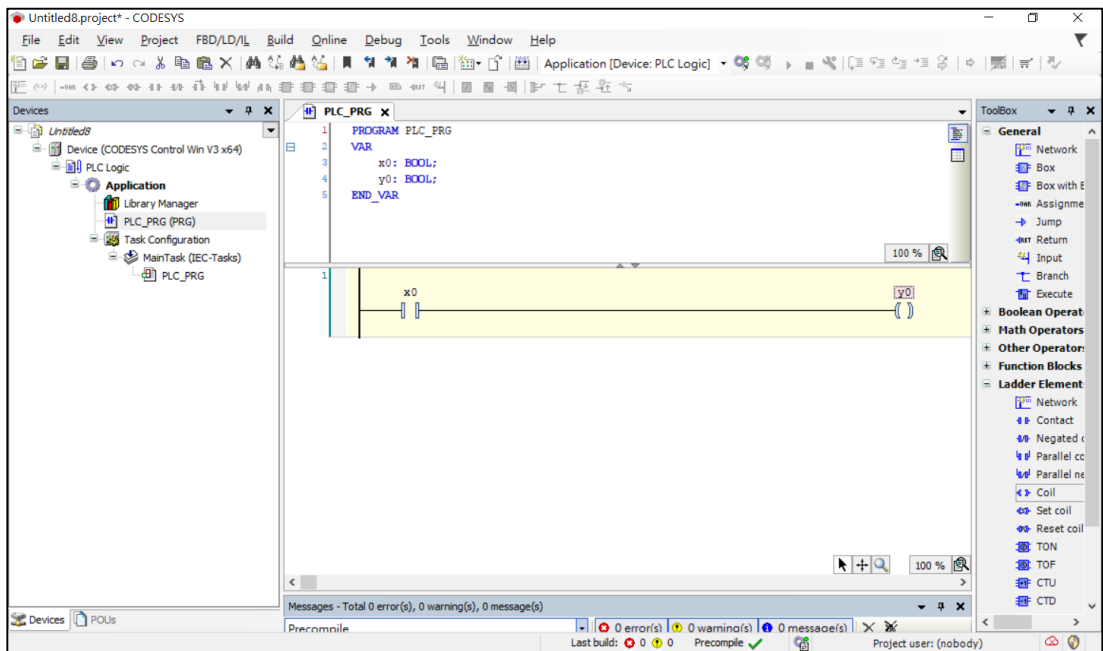


Fig1.3 Create a new project

1.3 Add ProfiNet device

Open background menu with a right mouse button click on “Device(CoDeSys Control Win V3 x64)”

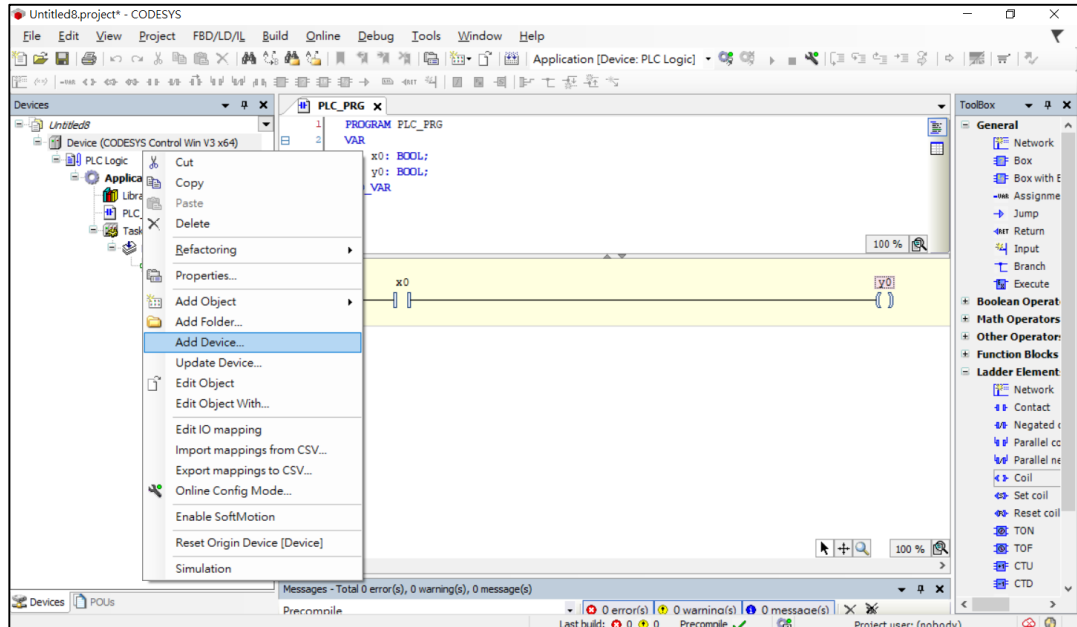


Fig1.4 Add Profinet device

Select “Add Device ...”.

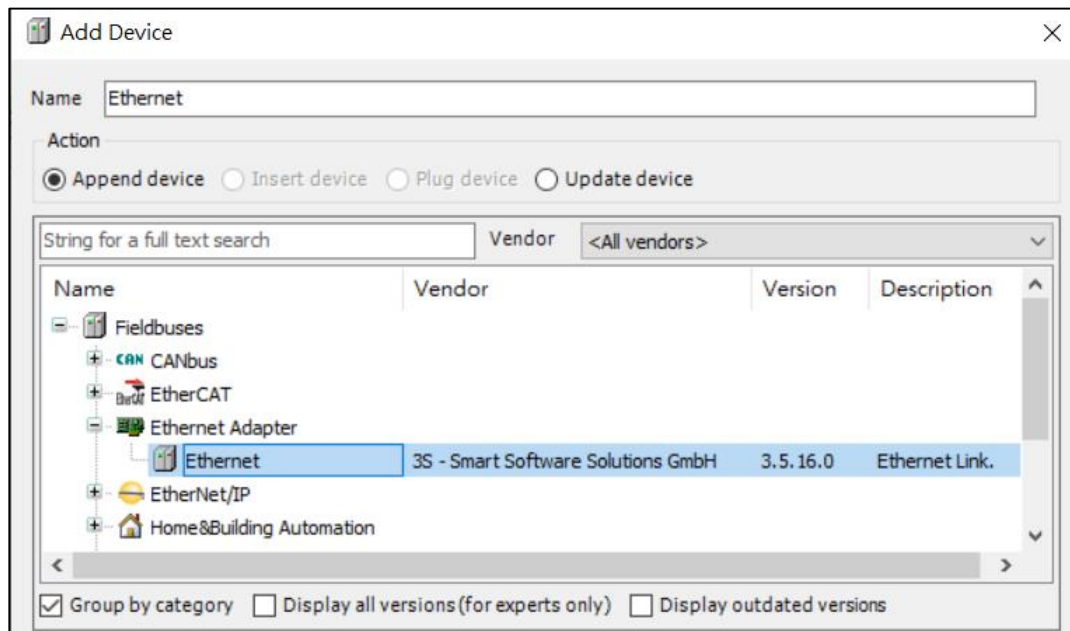


Fig1.5 Add ProfiNet device

Select “Ethernet” and press button “Add Device”. Afterwards leave dialog with a click on button “Close”.

The wizard adds the ProfiNet device to control it.

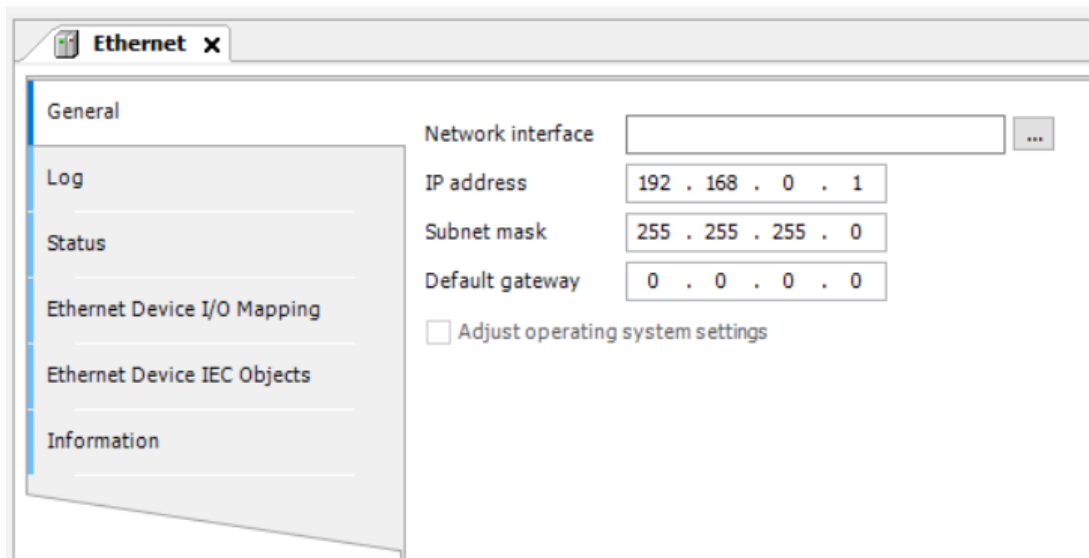


Fig1.6 Add ProfiNet device

Press browse to select the network adapter. Make sure the gateway is active and the path to the soft plc is activated.

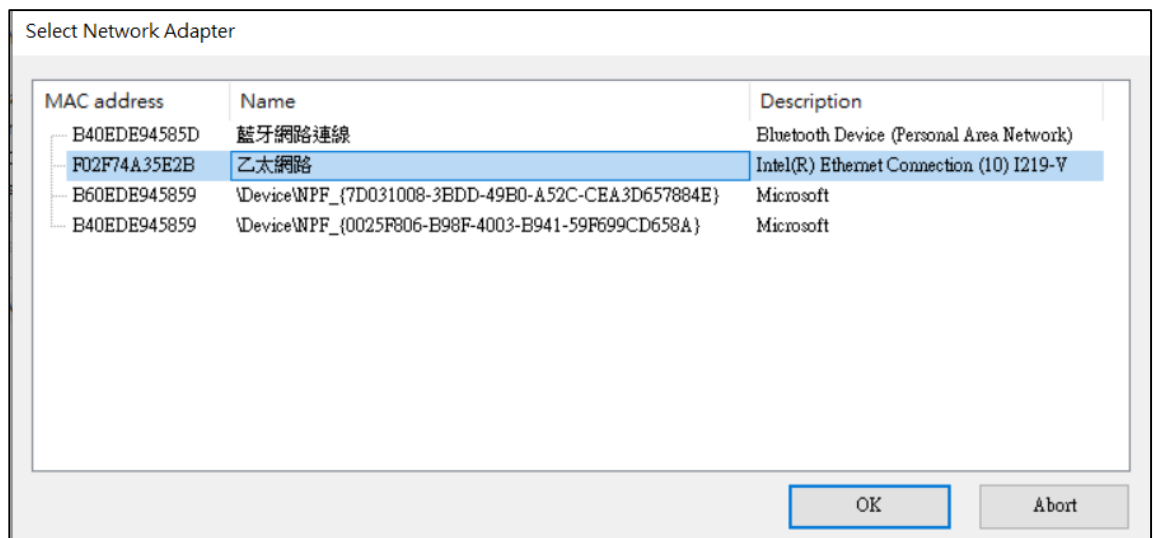


Fig1.7 Select Network Adapter

Open background menu with a right mouse button click on
 “Ethernet(Ethernet)”

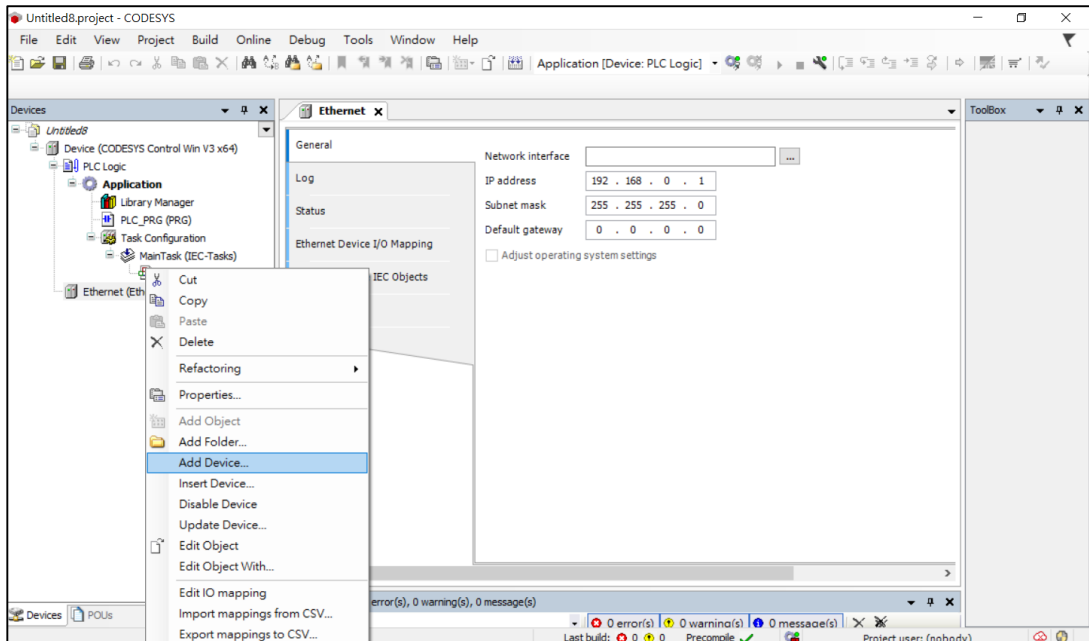


Fig1.8 Add Profinet device

Select “Add Device ...”

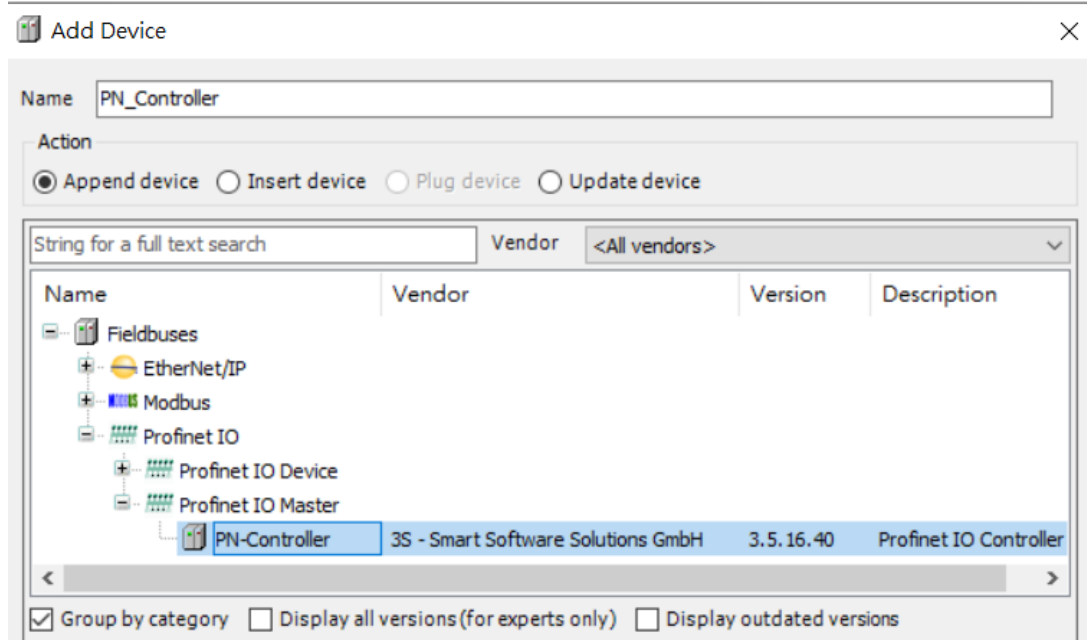


Fig1.9 Add ProfiNet device

Select “PN-Controller” and press button “Add Device”.
 Afterwards leave dialog with a click on button “Close”.

1.4 Add ProfiNet-Slave device

Install GX-CL110 product GSDML.

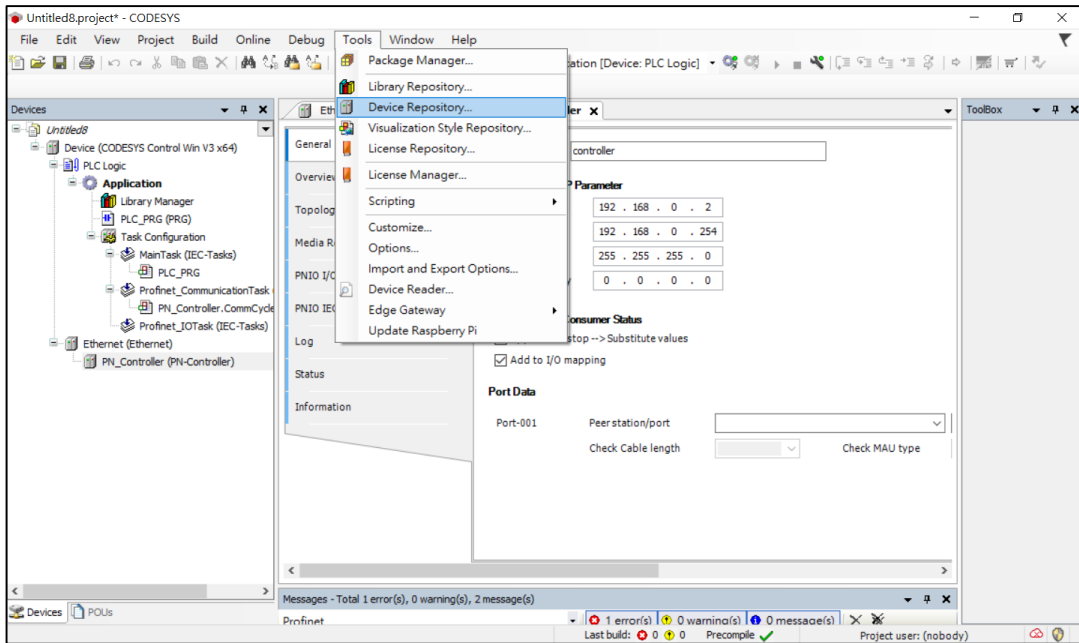


Fig1.10 Install GX-CL110 product GSDML.

Device Repository > Install > Select file

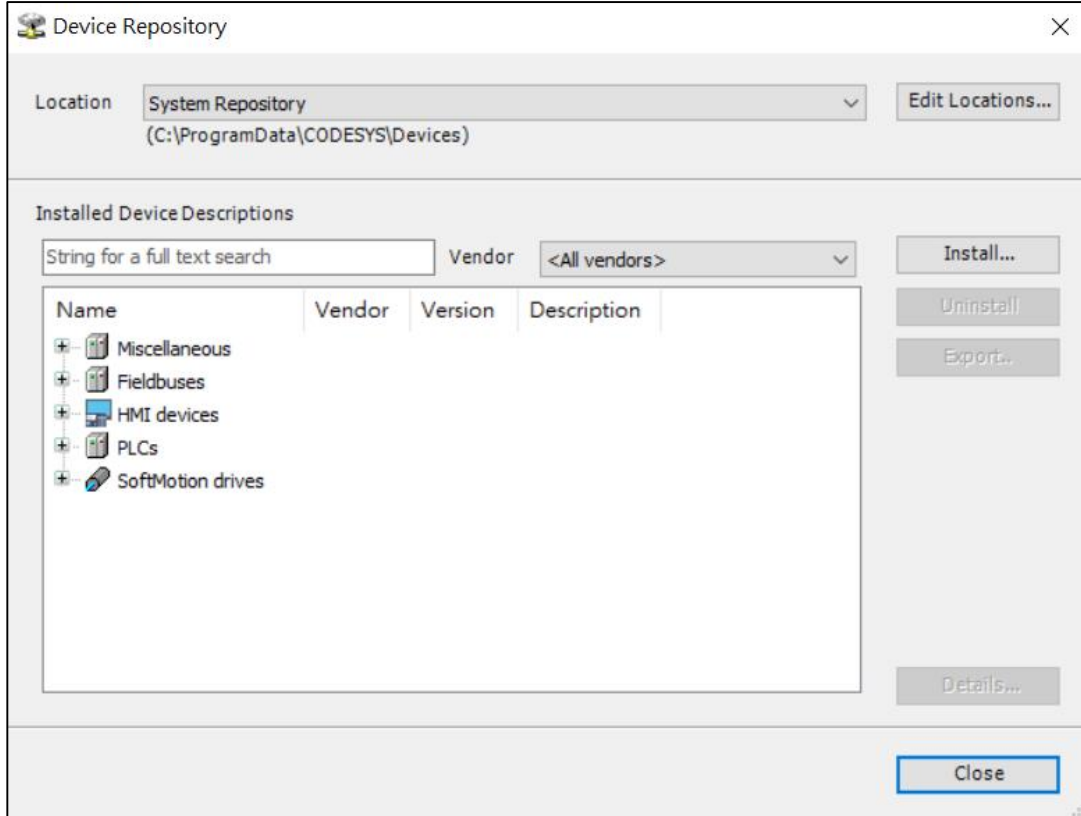


Fig1.11 Install GX-CL110 product GSDML.

scan the device

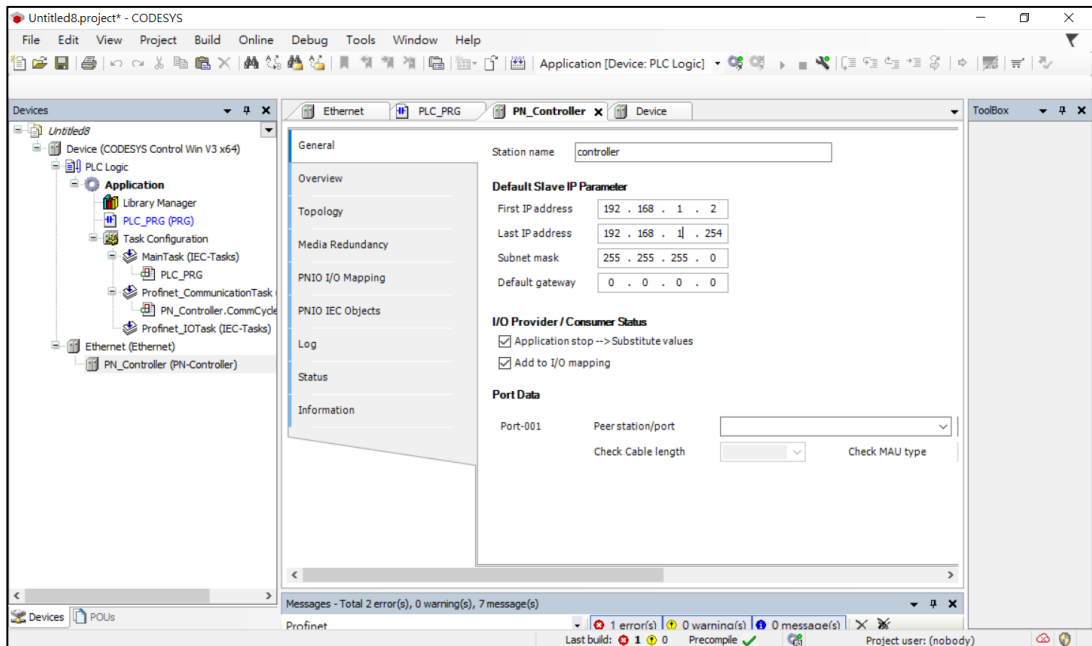


Fig1.12 Add ProfiNet-Slave device

Login with PLC.

Open background menu with a right mouse button click on

“PN-Controller(PN-Controller)”

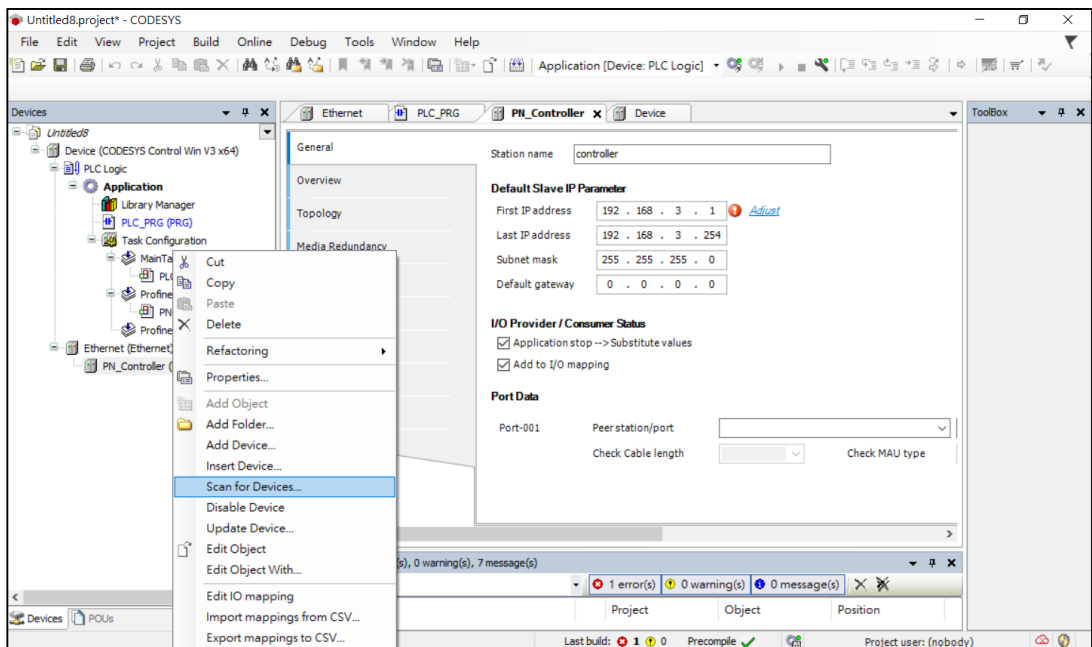


Fig1.13 Add ProfiNet-Slave device

Select “Scan for Device ”

1.5 Assign variables

Choose the register card EtherCatI/O access. Assign variables to the different modules.

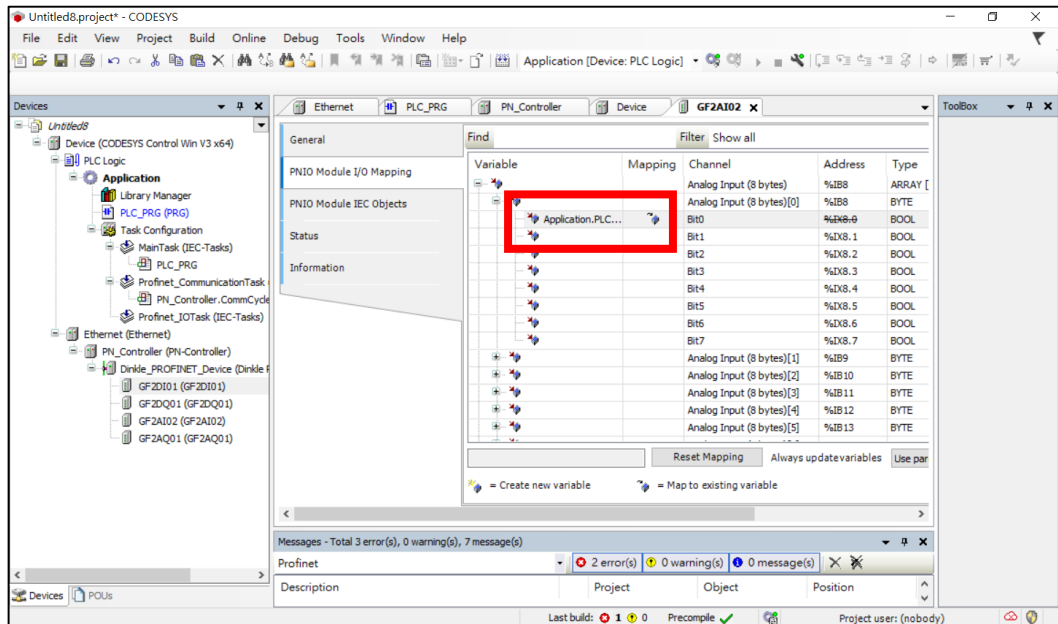


Fig1.14 Assign variables