



iO-GRID X Series

GX-CL120

EtherCAT coupler

with CoDeSys



目錄

1. Solution	3
1.1 Install “CoDeSys V3”	3
1.2 Create a new project	3
1.3 Add EtherCAT-Master device	5
1.4 Add EtherCAT-Slave device	7
1.5 Assign variables	11

1. Solution

1.1 Install “CoDeSys V3”

Download “CoDeSys V3.5 Patch 4” demo version, available on:

http://www.3s-software.com/index.shtml?en_download

Start “setup.exe” and follow installation instructions.

Take care that both products “IDE” and “SoftPLC” will be installed.

1.2 Create a new project

Select “Menu -> File -> New Project...” or press [Ctrl] + N.

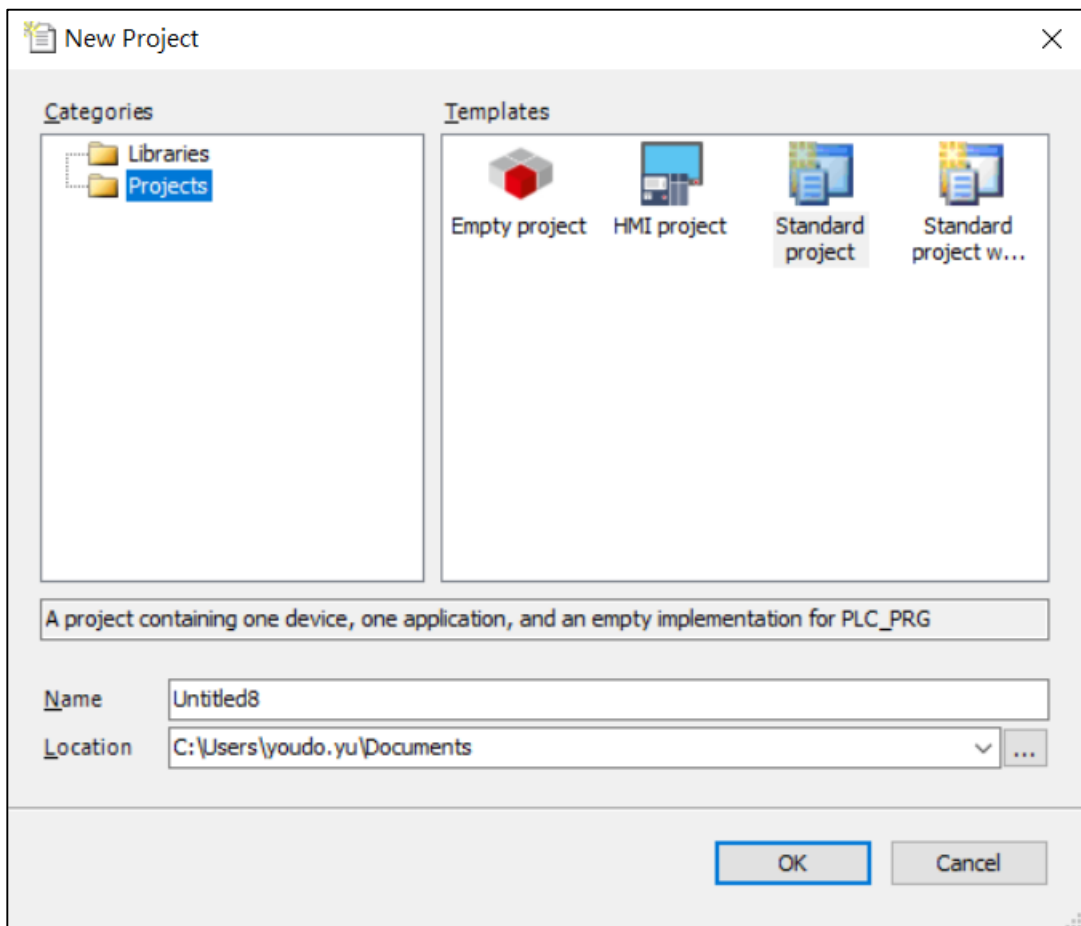


Fig1.1 Create a new project

Select “Standard project” and assign name and storage folder.

Afterwards press button “OK”

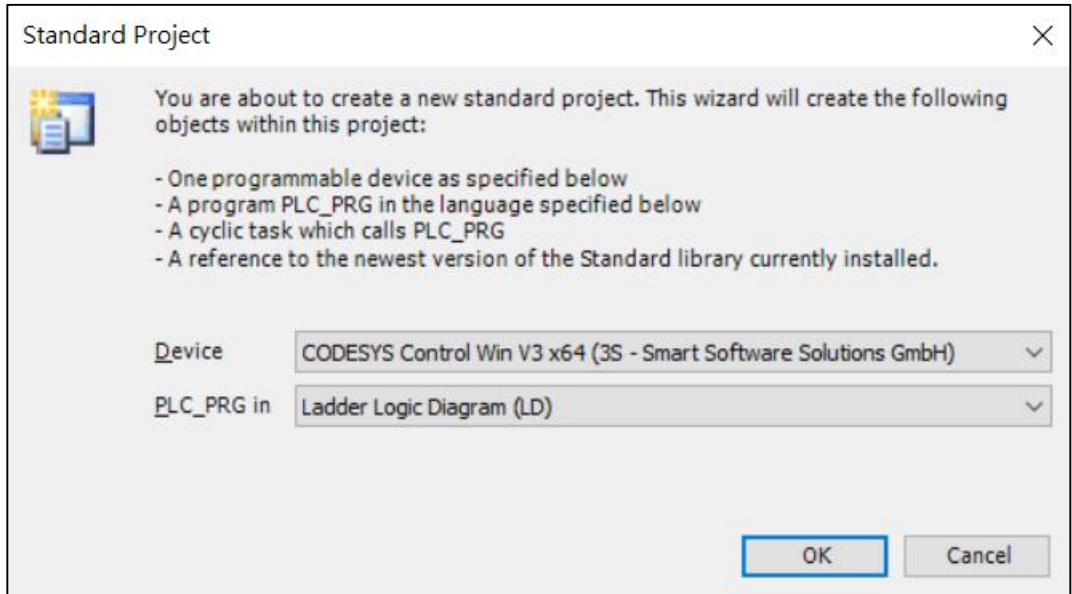


Fig1.2 Create a new project

Select “CoDeSys Control Win V3 x64” as target device and programming language for PLC_PRG. Afterwards press button “OK”.

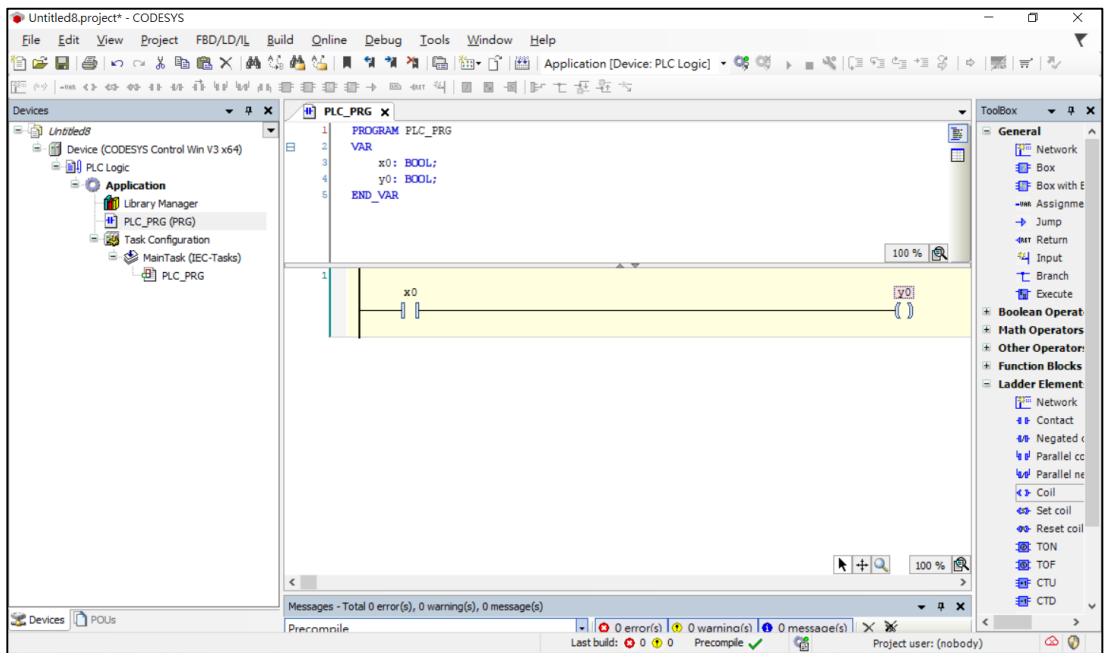


Fig1.3 Create a new project

1.3 Add EtherCAT-Master device

Open background menu with a right mouse button click on “Device(CoDeSys Control Win V3 x64)”

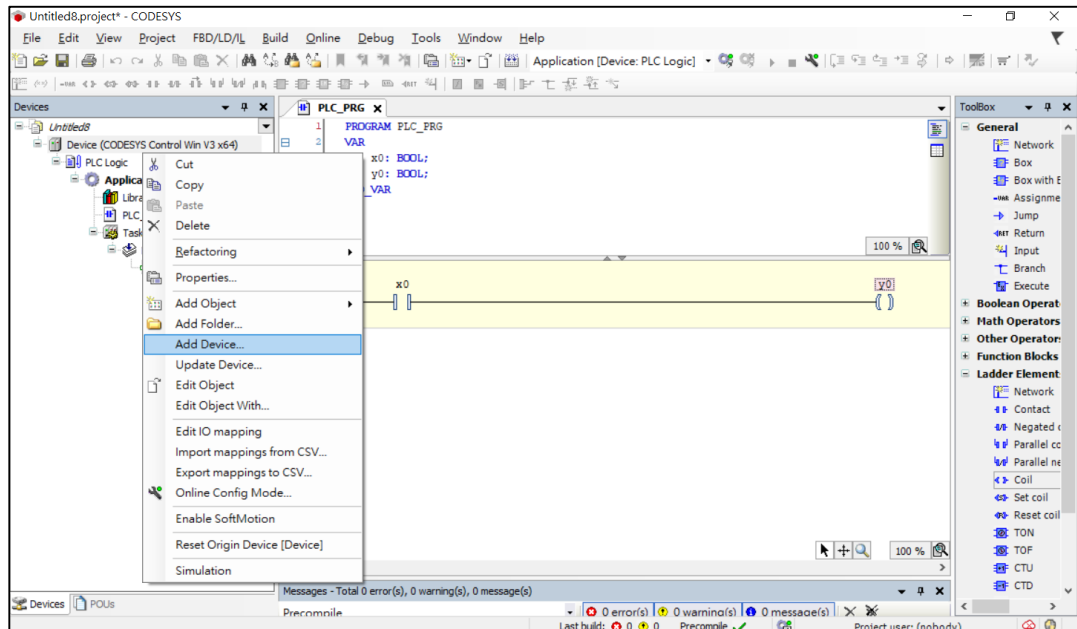


Fig1.4 Add EtherCAT-Master device

Select “Add Device ...”.

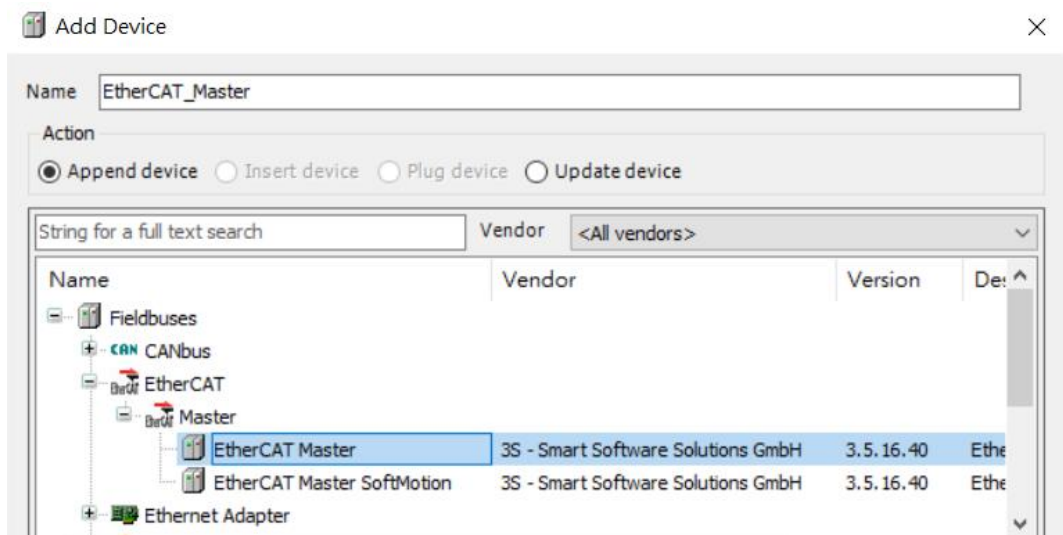


Fig1.5 Add EtherCAT-Master device

Select “EtherCAT Master” and press button “Add Device”. Afterwards leave dialog with a click on button “Close”.

The wizard adds the EtherCAT-Master device together with a dedicated task to control it.

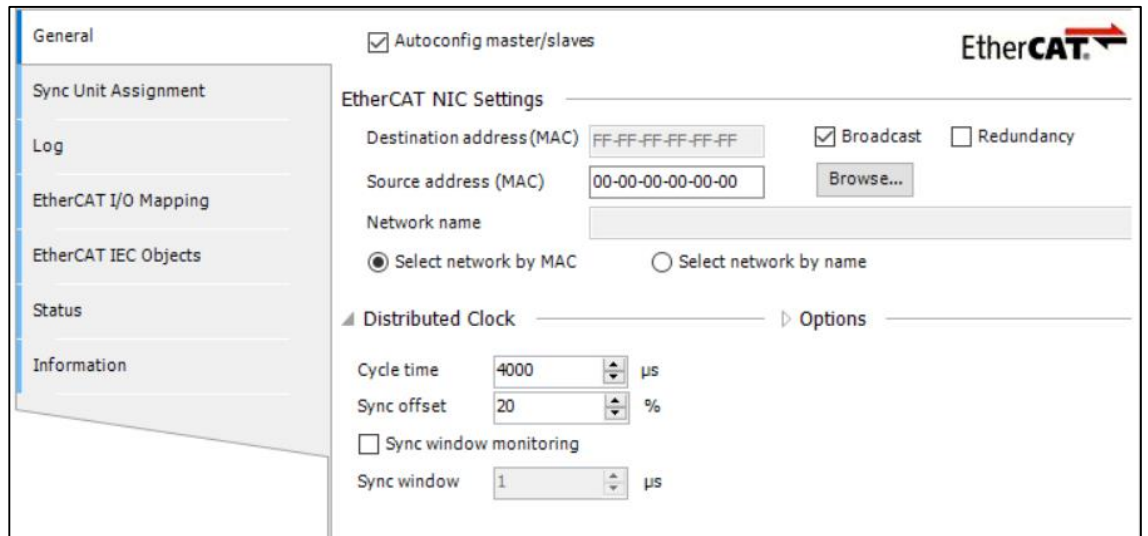


Fig1.6 Add EtherCAT-Master device

Press browse to select the network adapter. Make sure the gateway is active and the path to the soft plc is activated.

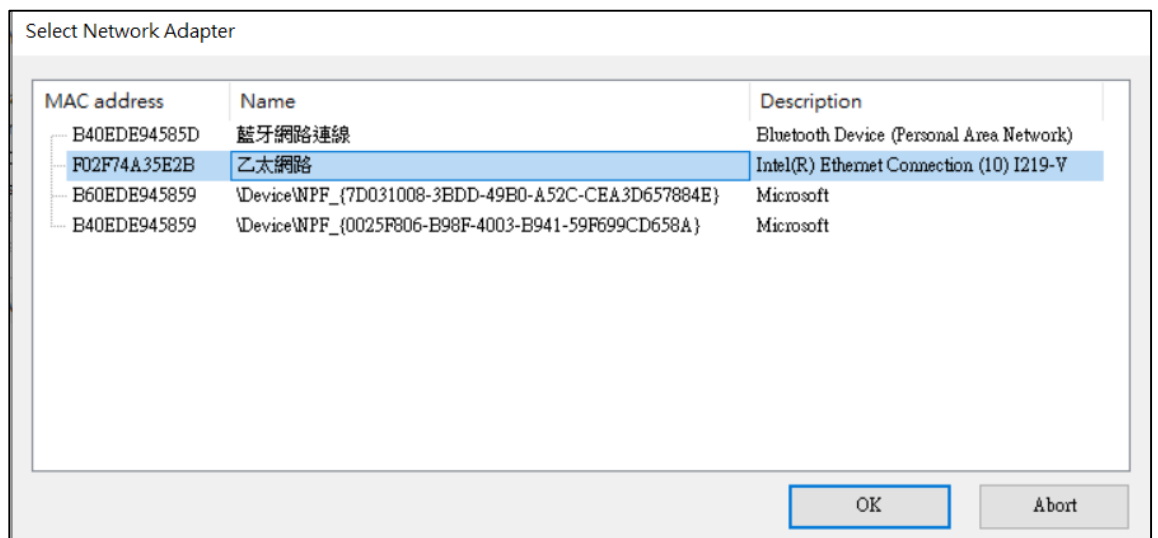


Fig1.7 Select Network Adapter

1.4 Add EtherCAT-Slave device

Install Gx-CL120 product XML.

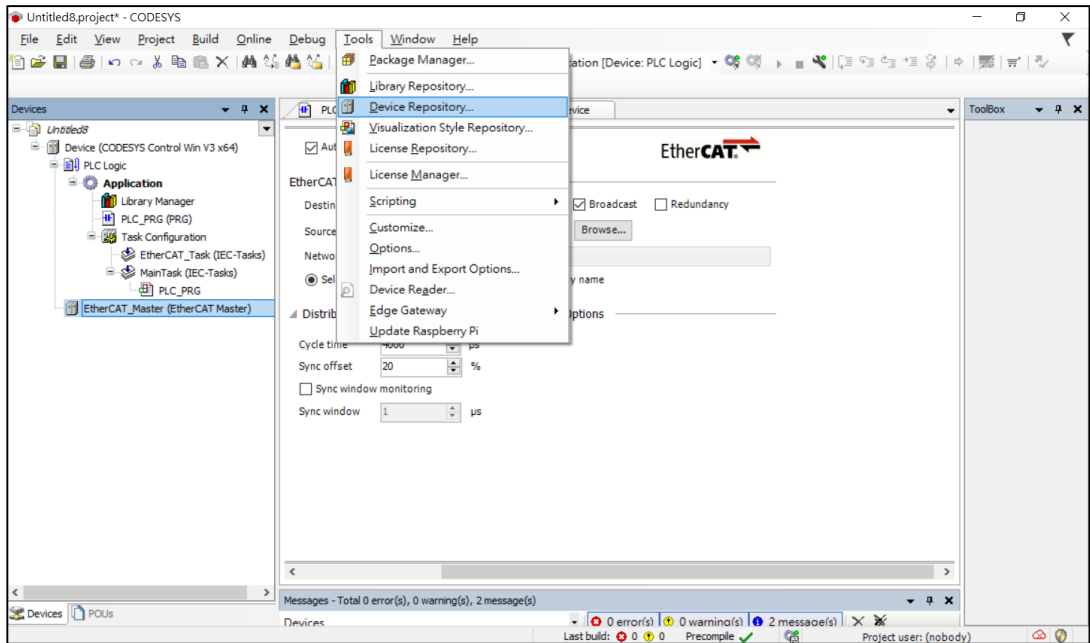


Fig1.8 Install Gx-CL120 product XML

Device Repository > Install > Select file

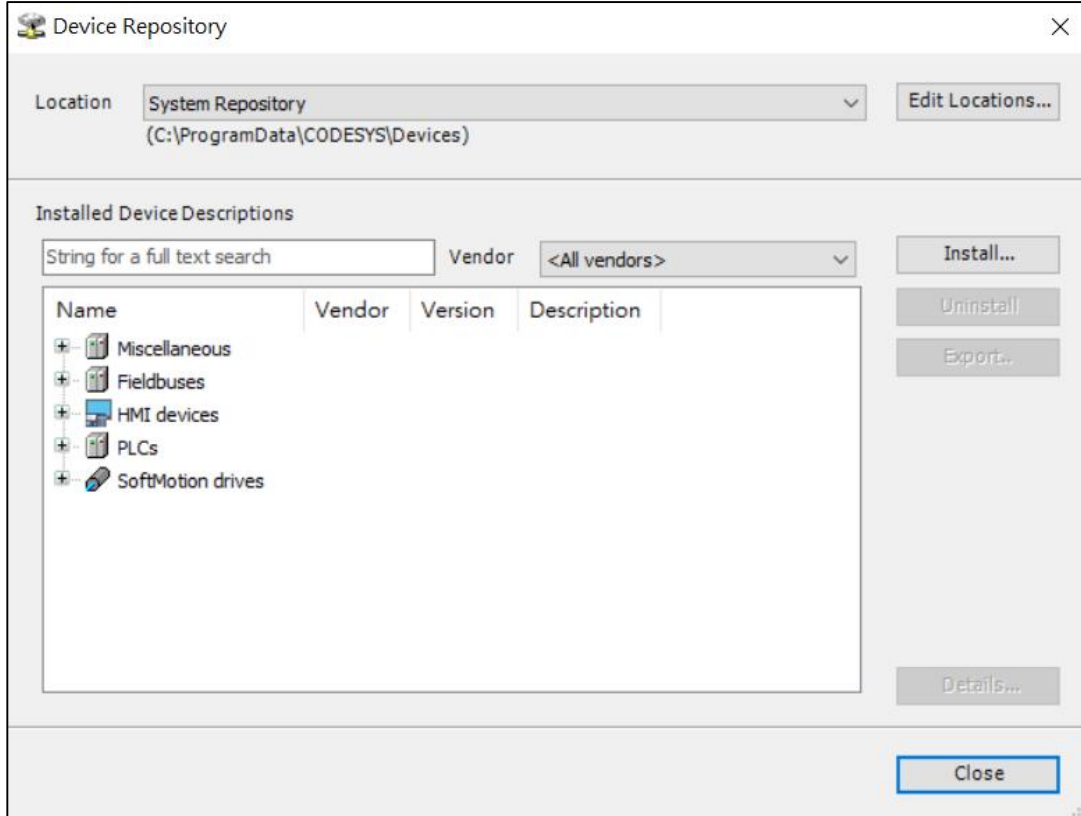


Fig1.9 Install Gx-CL120 product XML

Open background menu with a right mouse button click on
 “EtherCAT_Master(EtherCAT Master)”

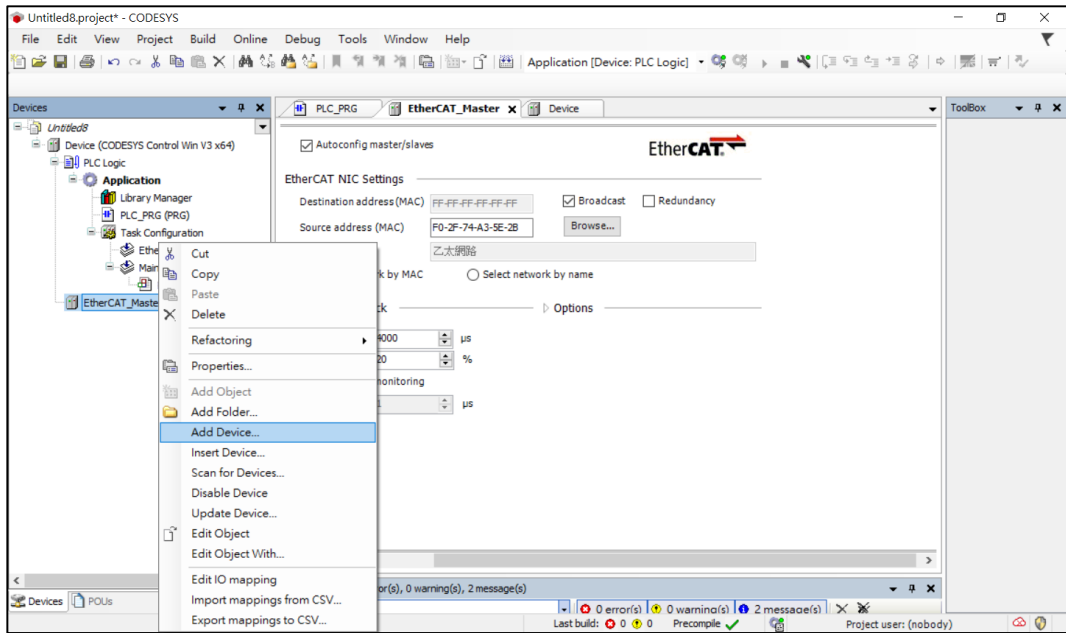


Fig1.10 Add EtherCAT-Slave device

Select “Add Device ...”

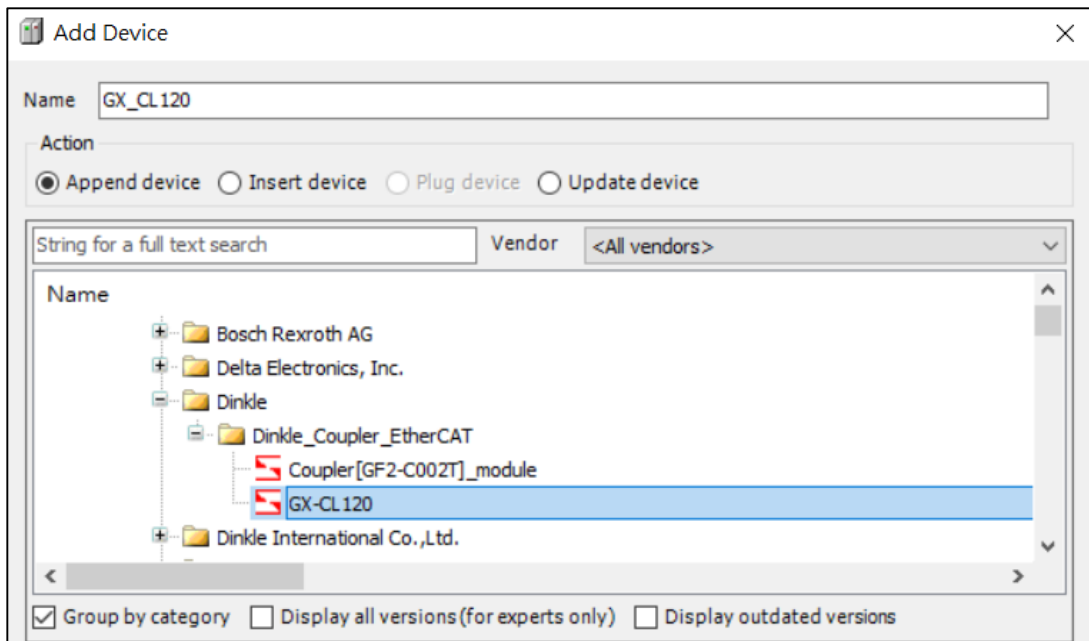


Fig1.11 Add EtherCAT-Slave device

Select “GX-CL120” and press button “Add Device”.

Afterwards leave dialog with a click on button “Close”.

Open background menu with a right mouse button click on
 “GX-CL120”

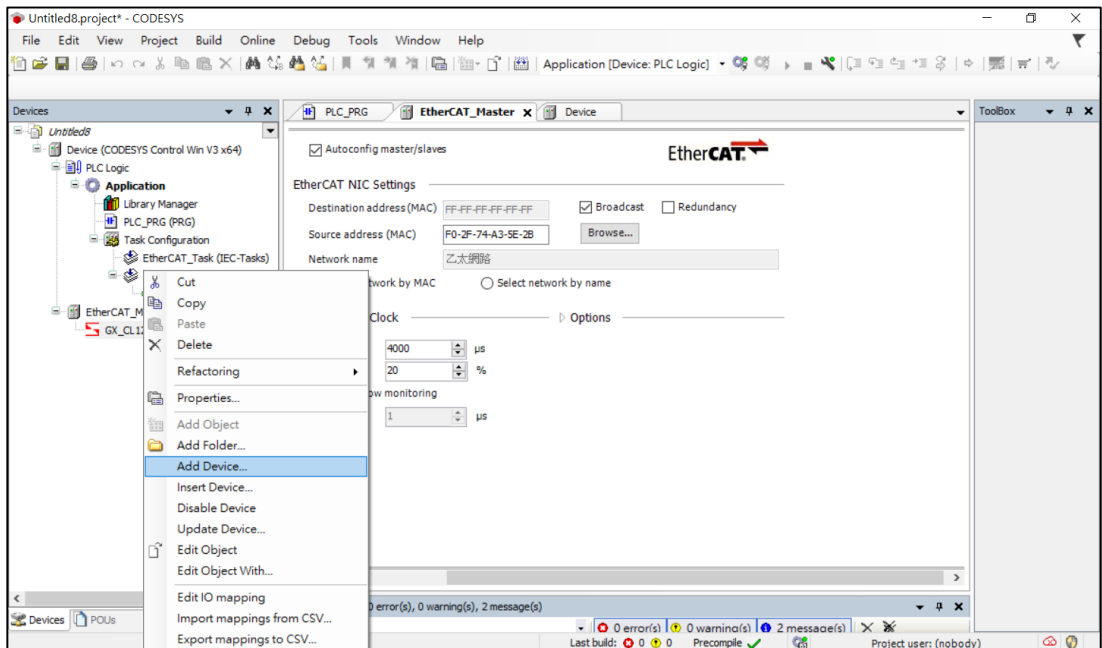


Fig1.12 Add EtherCAT-Slave device

Select “Add Device ...”

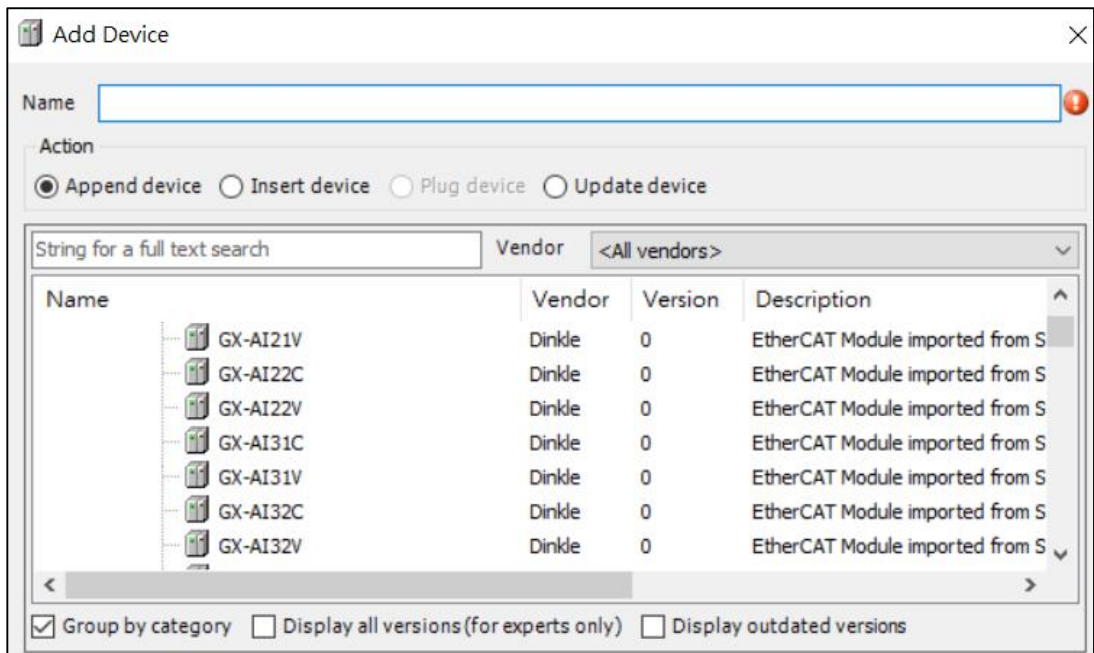


Fig1.13 Add EtherCAT-Slave device

Or you can scan the device

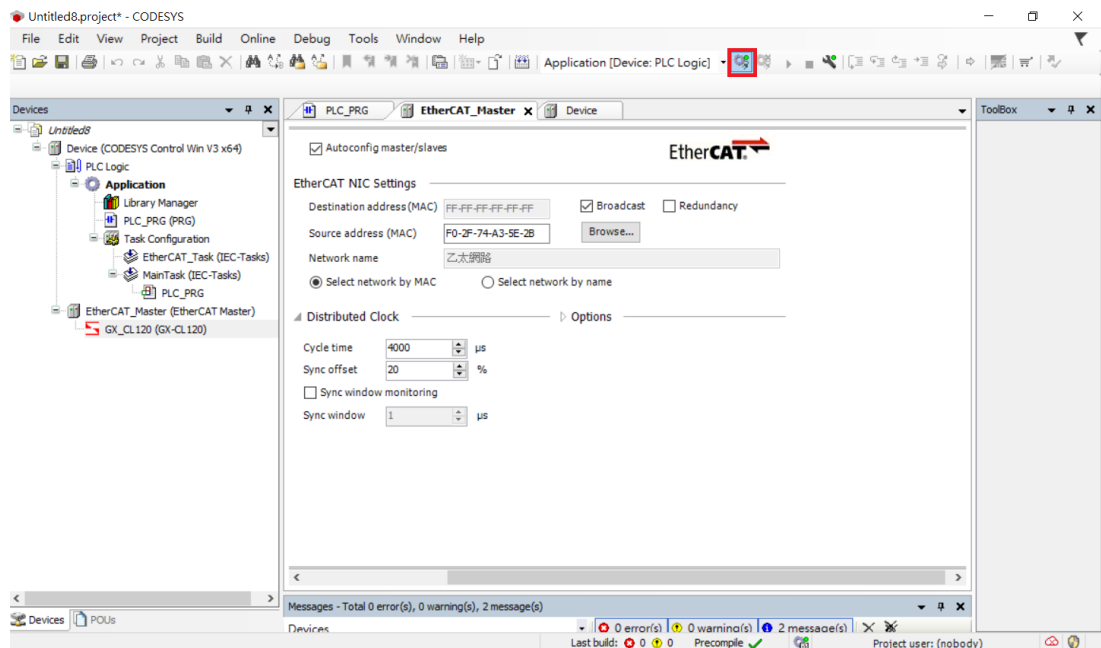


Fig1.14 Add EtherCAT-Slave device

Login with PLC.

Open background menu with a right mouse button click on

“EtherCAT_Master(EtherCAT Master)”

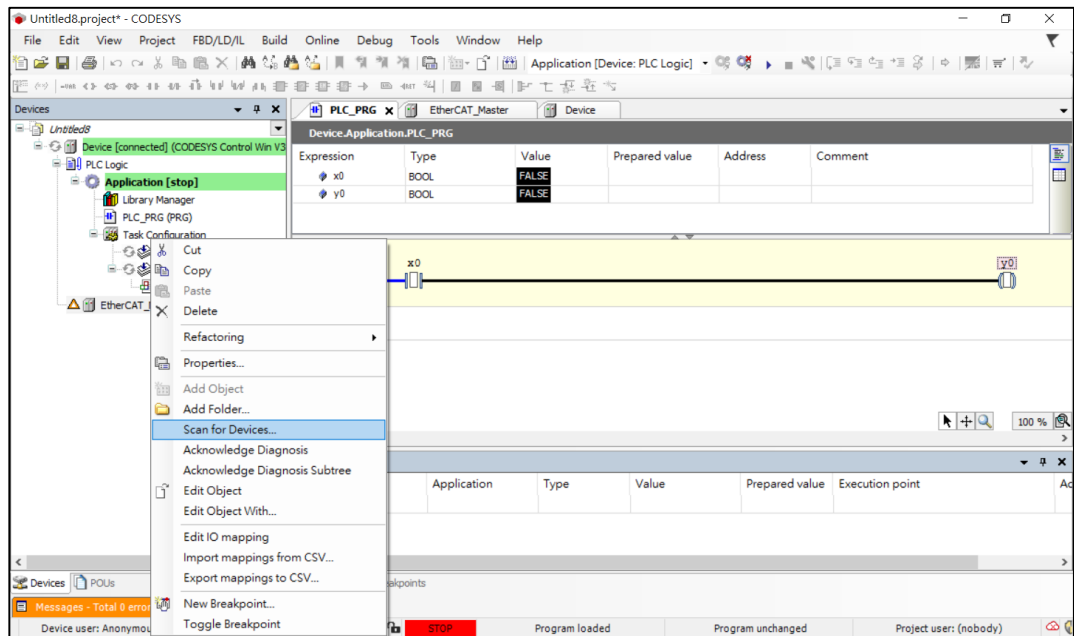


Fig1.15 Add EtherCAT-Slave device

Select “Scan for Device ”

1.5 Assign variables

Choose the register card EtherCatI/O access. Assign variables to the different modules.

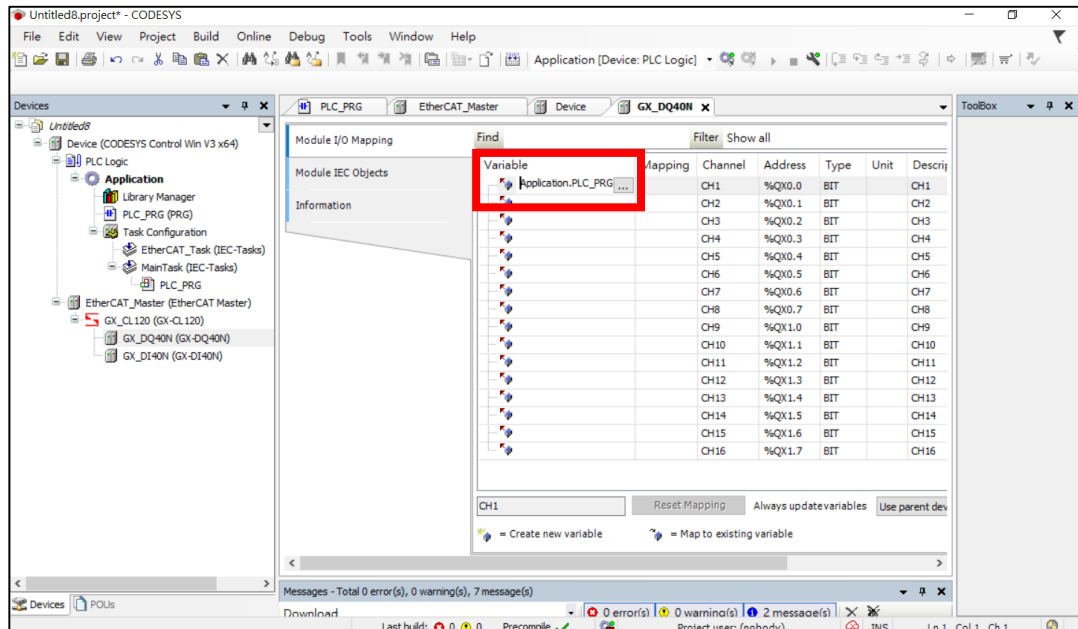


Fig1.16 Assign variables