



# **iO-GRID X Series**

## **GX-CL130**

### **EtherNet/IP coupler**

### **with CoDeSys**



目錄

1. Solution .....	3
1.1 Install “CoDeSys V3” .....	3
1.2 Create a new project .....	3
1.3 Add ProfiNet device .....	5
1.4 Add ProfiNet-Slave device .....	8
1.5 Assign variables .....	10

# 1. Solution

## 1.1 Install “CoDeSys V3”

Download “CoDeSys V3.5 Patch 4” demo version, available on:

[http://www.3s-software.com/index.shtml?en\\_download](http://www.3s-software.com/index.shtml?en_download)

Start “setup.exe” and follow installation instructions.

Take care that both products “IDE” and “SoftPLC” will be installed.

## 1.2 Create a new project

Select “Menu -> File -> New Project...” or press [Ctrl] + N.

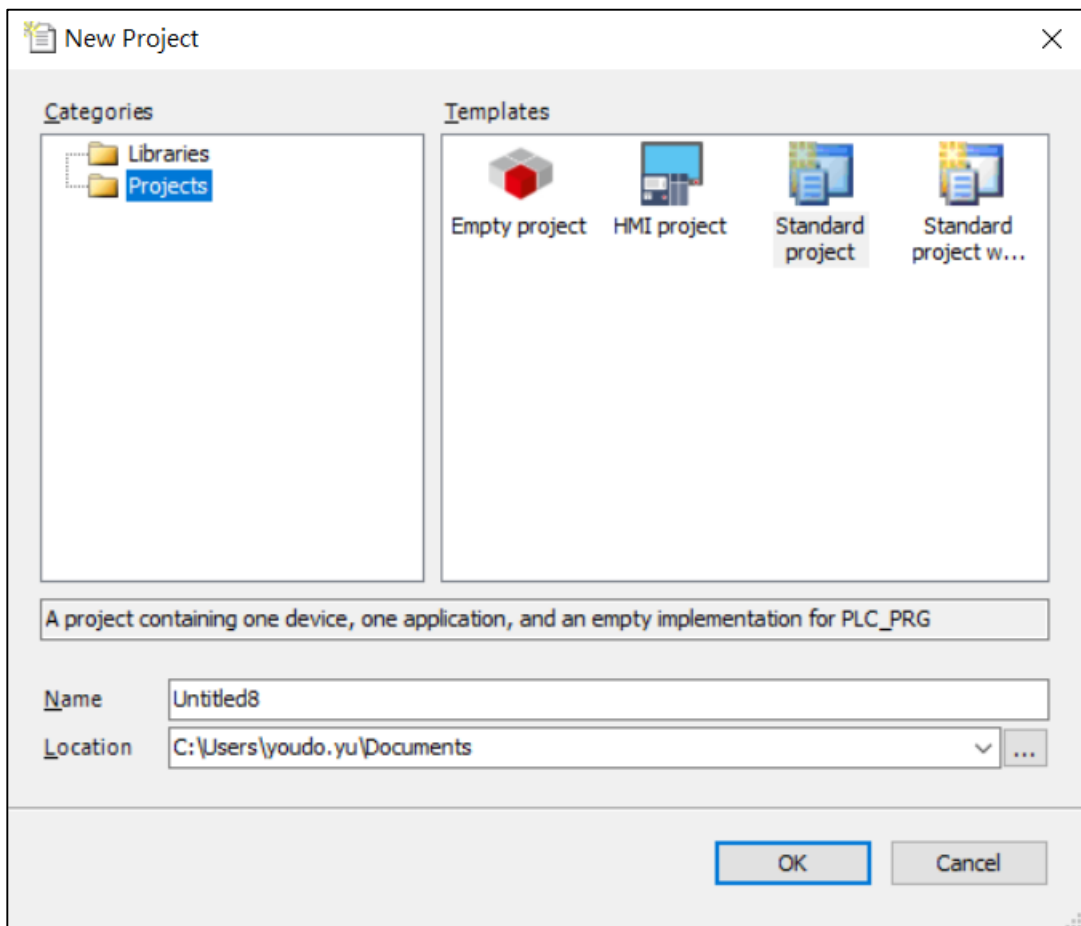


Fig1.1 Create a new project

Select “Standard project” and assign name and storage folder.

Afterwards press button “OK”

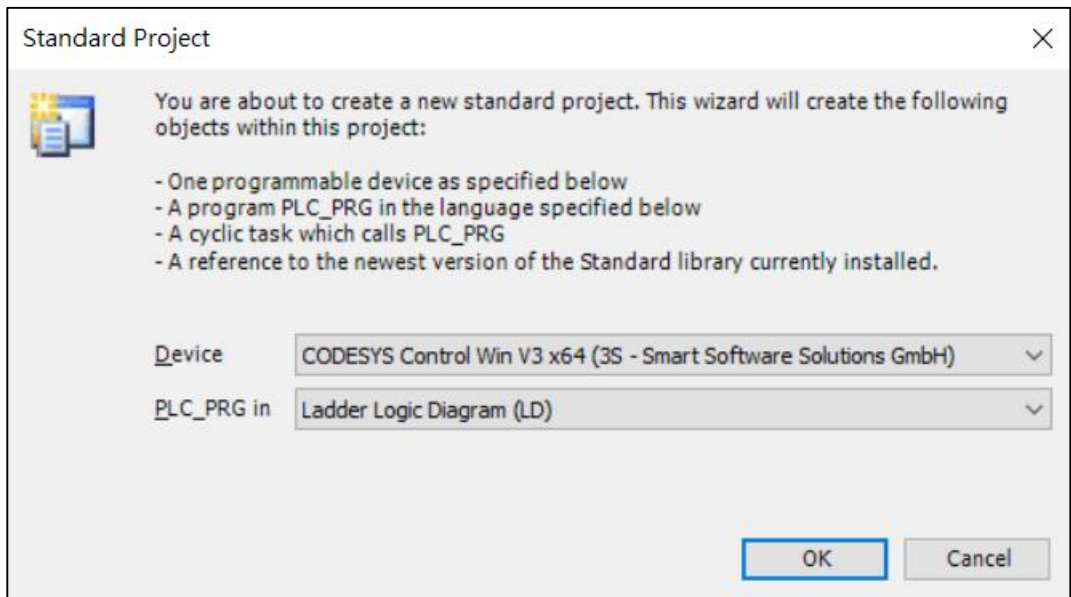


Fig1.2 Create a new project

Select “CoDeSys Control Win V3 x64” as target device and programming language for PLC\_PRG. Afterwards press button “OK”.

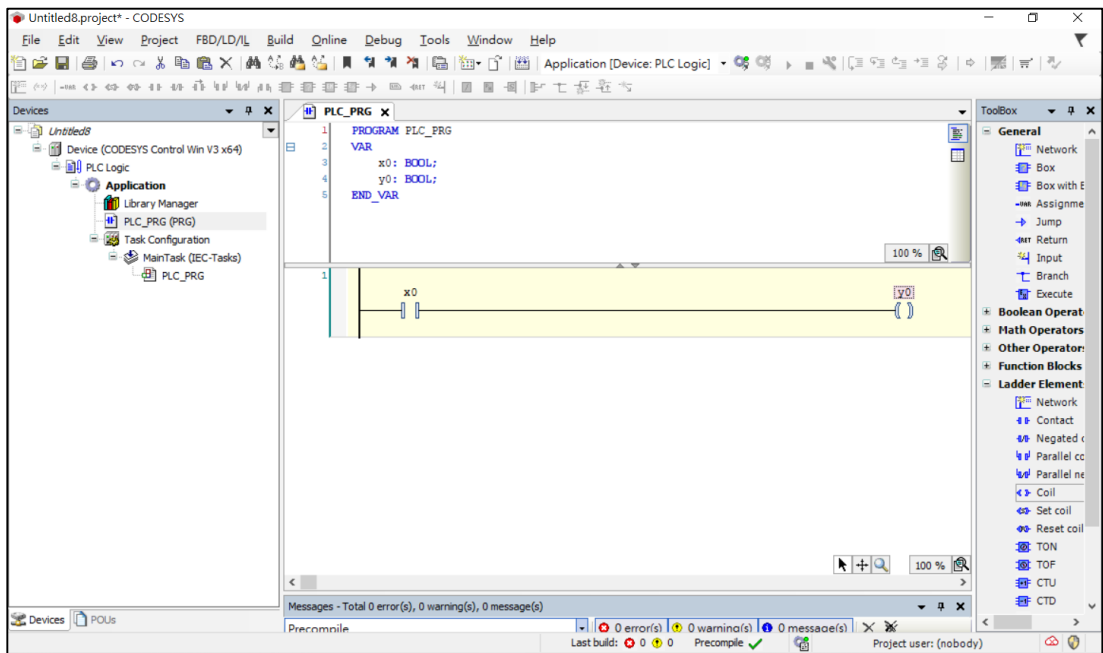


Fig1.3 Create a new project

## 1.3 Add EtherNet/IP device

Open background menu with a right mouse button click on “Device(CoDeSys Control Win V3 x64)”

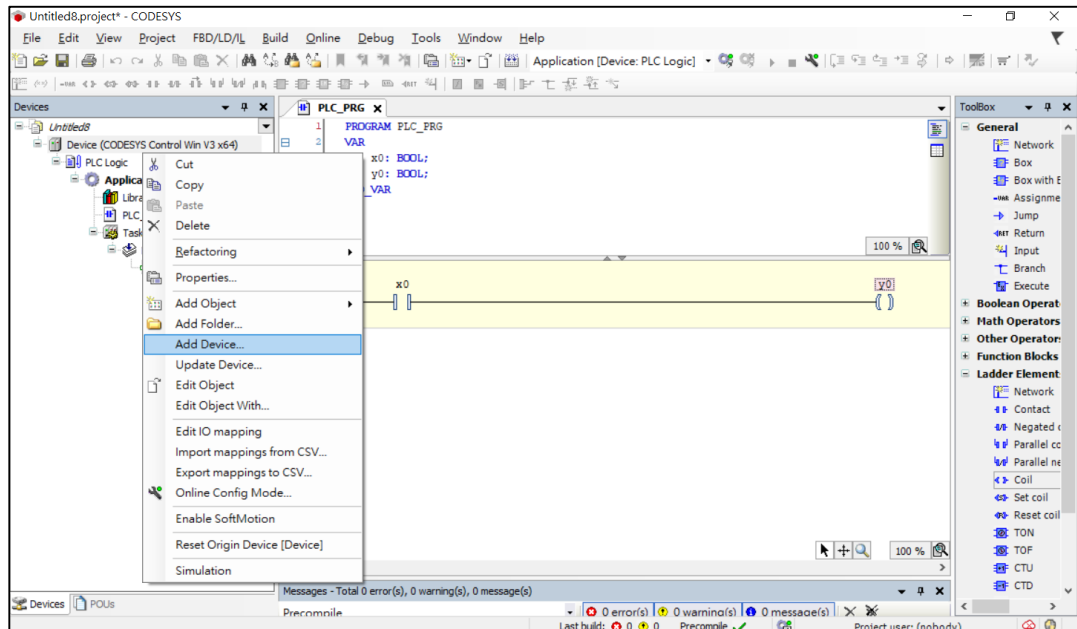


Fig1.4 Add EtherNet/IP device

Select “Add Device ...”.

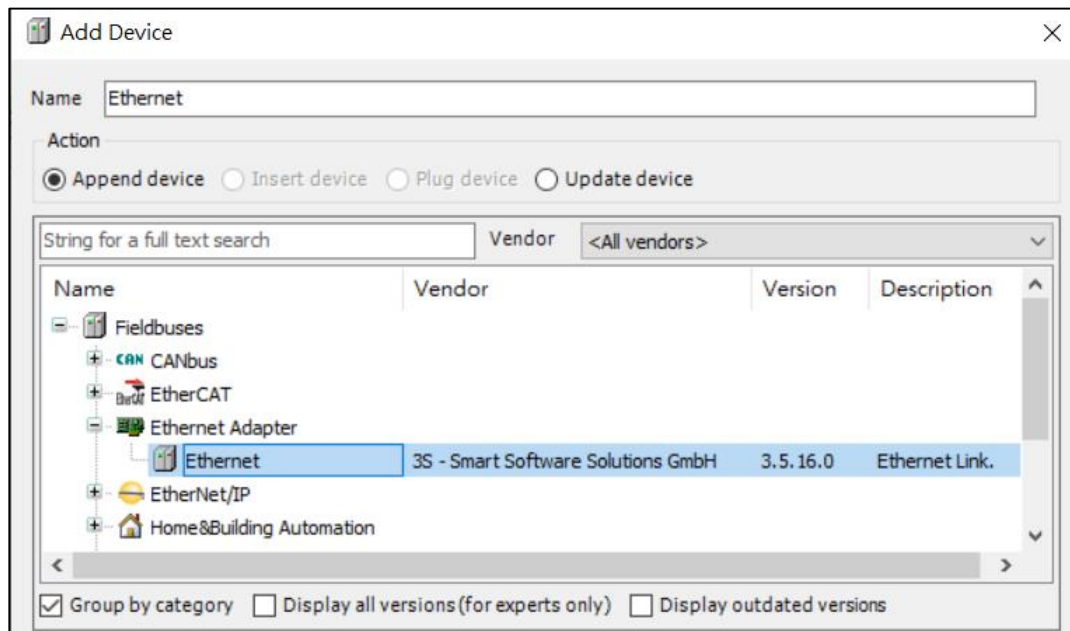


Fig1.5 Add EtherNet/IP device

Select “Ethernet” and press button “Add Device”. Afterwards leave dialog with a click on button “Close”.

The wizard adds the EtherNet/IP device to control it.

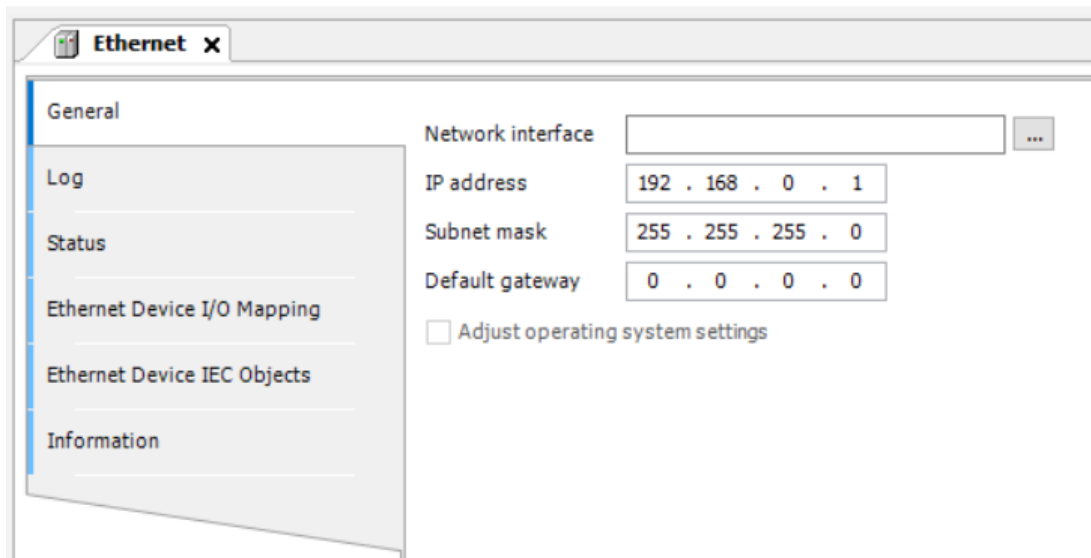


Fig1.6 Add EtherNet/IP device

Press browse to select the network adapter. Make sure the gateway is active and the path to the soft plc is activated.

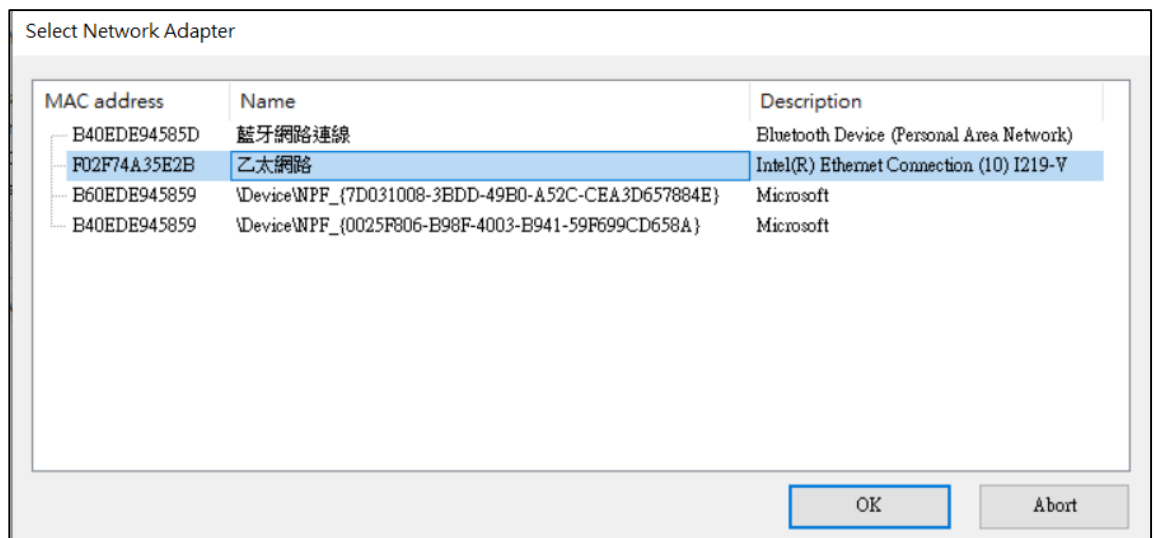


Fig1.7 Select Network Adapter

Open background menu with a right mouse button click on  
 “Ethernet(Ethernet)”

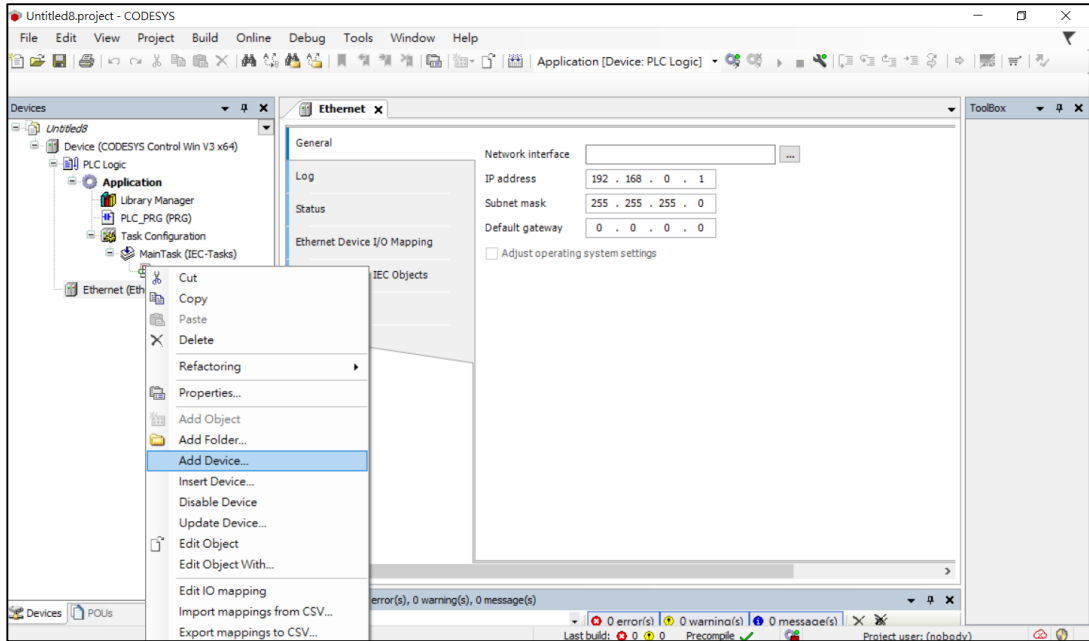


Fig1.8 Add EtherNet/IP device

Select “Add Device ...”

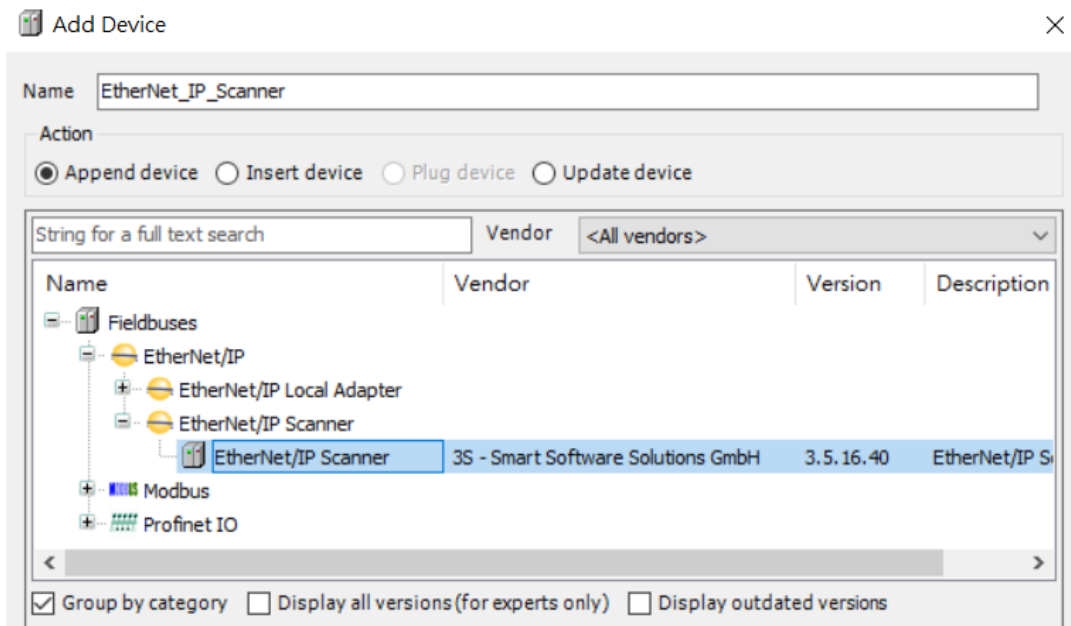


Fig1.9 Add EtherNet/IP device

Select “EtherNet/IP Scanner” and press button “Add Device”.  
 Afterwards leave dialog with a click on button “Close”.

## 1.4 Add EtherNet/IP-Slave device

Install GX-CL130 product EDS.

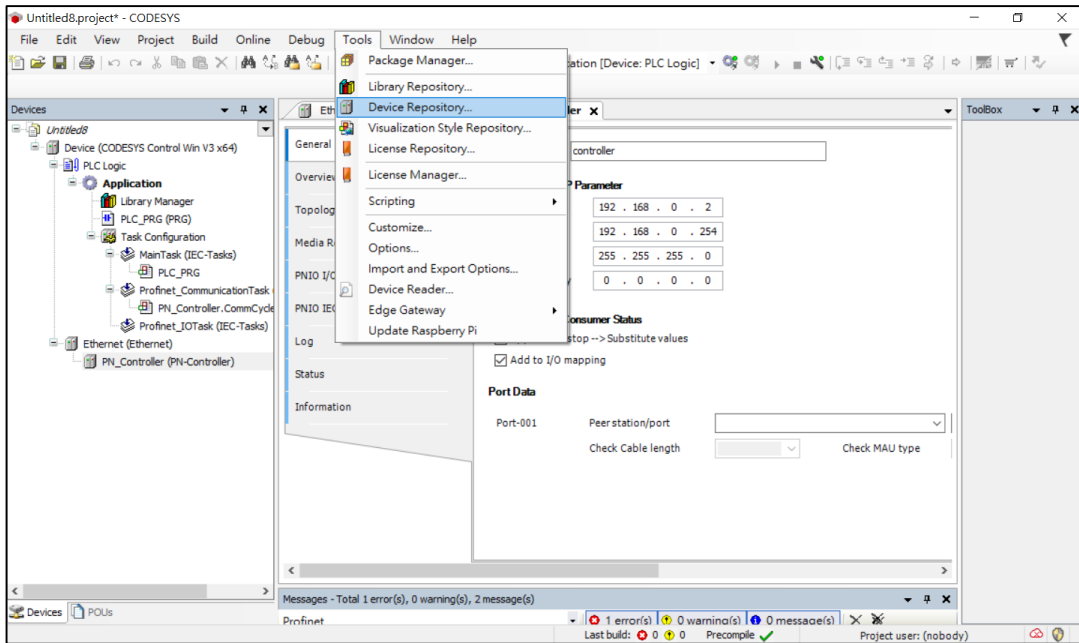


Fig1.10 Install GX-CL130 product EDS

Device Repository > Install > Select file

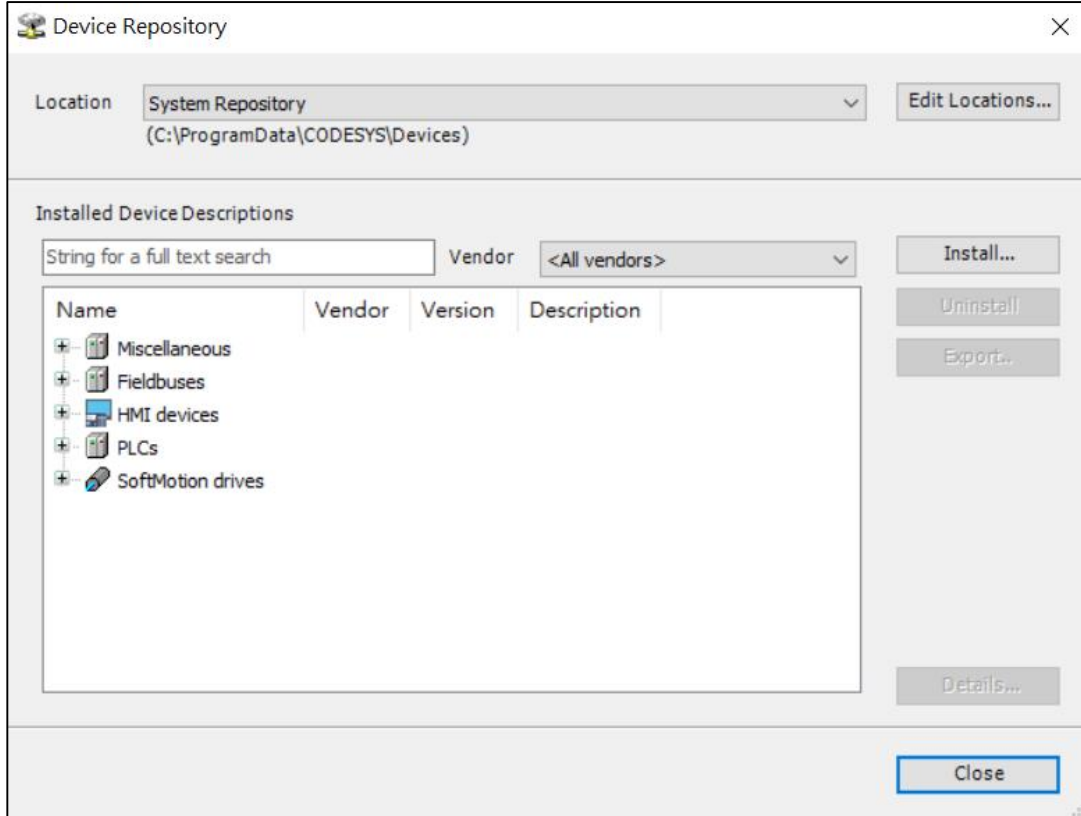


Fig1.11 Install GX-CL130 product EDS.



scan the device

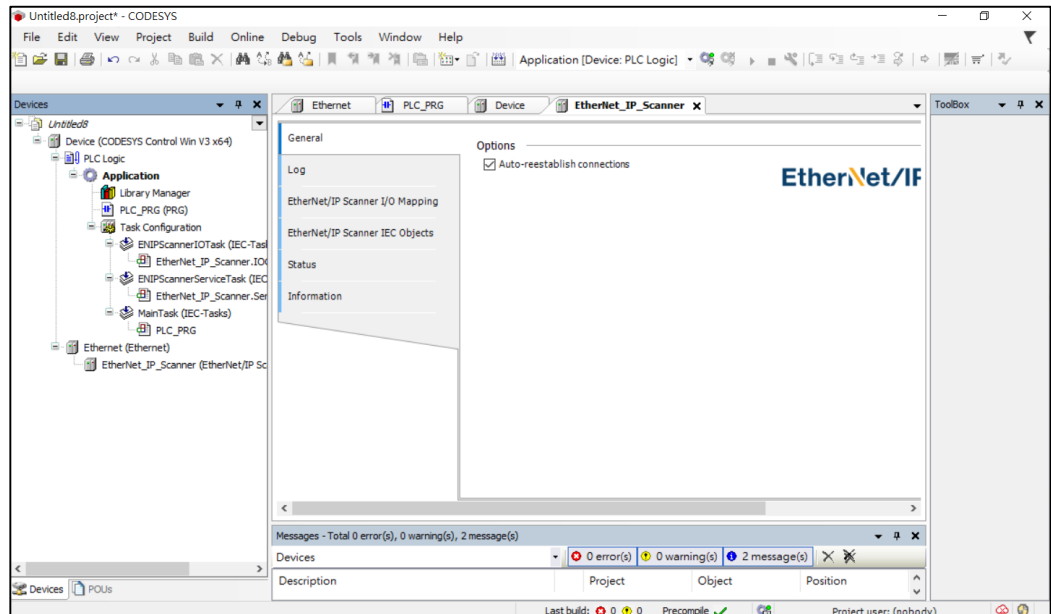


Fig1.12 Add EtherNet/IP -Slave device

Login with PLC.

Open background menu with a right mouse button click on

“PN-Controller(PN-Controller)”

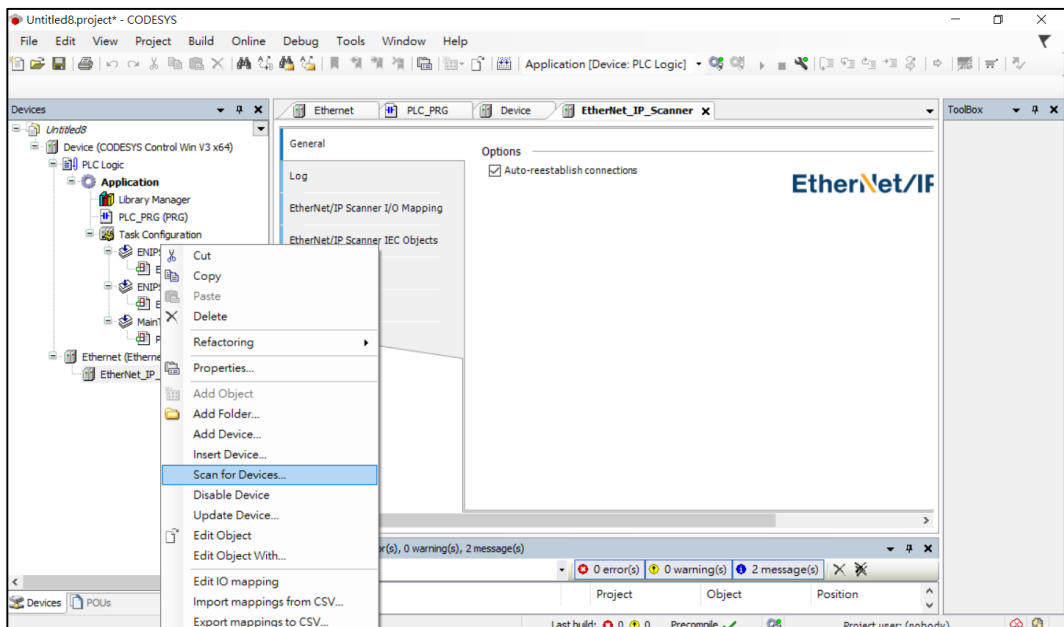


Fig1.13 Add EtherNet/IP -Slave device

Select “Scan for Device ”

## 1.5 Assign variables

Choose the register card EtherNet/IP I/O access. Assign variables to the different modules.

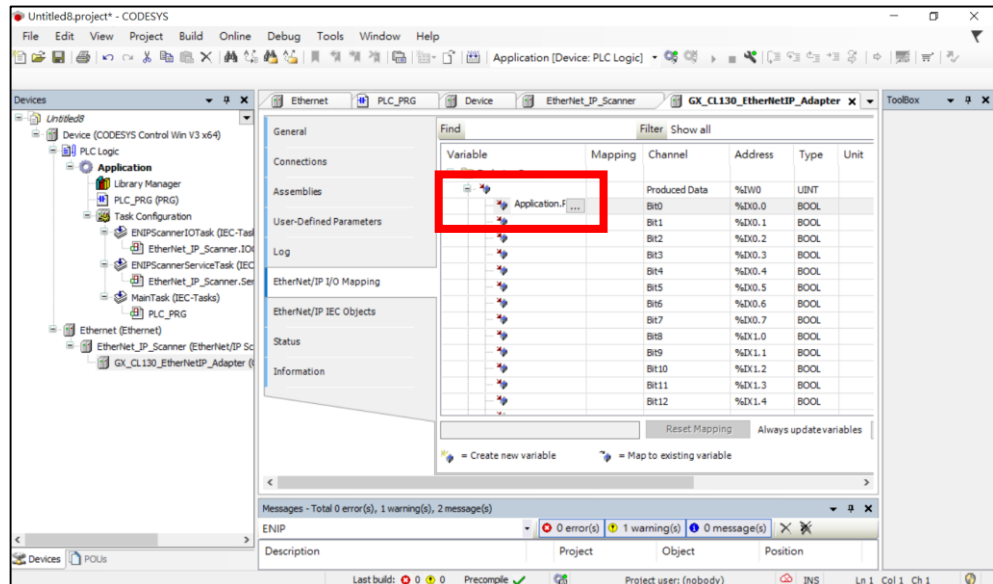


Fig1.14 Assign variables